

BAM

ANNUAL REPORT



# BAM'S MISSION IS TO BE THE HOME FOR ADVENTUROUS ARTISTS, AUDIENCES, AND IDEAS.

3—6

## GREETINGS

Chair Letter, 4  
President & Executive Producer's Letter, 5  
BAM Campus, 6

7—35

## WHAT WE DO

2013 Next Wave Festival, 8–10  
2014 Winter/Spring Season, 11–13  
BAM Rose Cinemas, 14–19  
    First-run Films, 15  
    BAMcinématek, 16–17  
    BAMcinemaFest, 18  
    HD Screenings, 19  
BAMcafé Live, 20–21  
BAM Hamm Archives, 22  
Digital Media, 23  
Get It Out There, 24  
Education & Humanities, 25–28  
    Education / BAMkids, 26  
    Humanities, 27–29  
    Professional Development Program, 30  
Community, 31–33  
DanceMotion USA<sup>SM</sup>, 34  
Visual Art, 35

36—43

## WHO WE ARE

Membership, 37  
BAM Board, 38  
BAM Supporters, 39–41  
BAM Staff, 42–43

44—46

## NUMBERS

BAM Financial Statements, 45–46

47—51

## THE TRUST

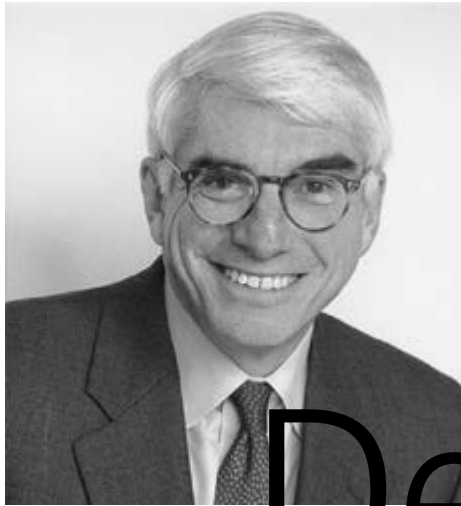
BET Chair Letter, 48  
BET Donors, 49  
BET Financial Statements, 50–51

# Greet

GREETINGS



# ings



# Dear Friends,

As we look back at fiscal year 2014, we also look ahead to the coming months, which will see the departure of BAM President Karen Brooks Hopkins. It's a bittersweet moment. Karen has served in several positions during her 36 years here, at each stop making BAM stronger. Over the last 16 years, as president, she has partnered with Executive Producer Joseph V. Melillo to forge a lasting legacy, both culturally and as a community nexus in BAM's Fort Greene neighborhood.

Filling her shoes was a difficult task, but after an extensive search, we welcome Katy Clark to the president's office; she has led the Orchestra of St. Luke's since 2010. We enter this period of transition with optimism that stems from the support we have from artists and supporters.

BAM is also well positioned to enliven the growing neighborhood. The core programming—the Next Wave Festival, the Winter/Spring Season, BAMcinématek, BAMkids, BAMcafé Live, and so much more—is complemented by humanities, visual art, and community events. These events will help to unite the residents of the many thousands of new dwellings and hotel rooms projected to be built in the area in the coming years. We are proud of the role we are playing in this growing and organic community.

The Ignite campaign, focusing on arts education programs, is three-quarters of the way toward meeting its three-year \$15 million goal. The Ignite Gala, held last June, honored board member and arts education booster Bob

Greenberg of R/GA, which has guided BAM's digital domain, increasingly essential to every aspect of the institution.

I've touched on the big change in leadership, and I'd like to recognize trustees who left the board during this period: Dr. William Pollard, Martin F. Mertz, and Derek Jenkins, as well as longtime BAM attorney Ron Feiner, who passed away in May; his death is an enormous loss to our board and whole organization. Please also acknowledge those who have joined BAM's board, bringing fresh ideas and energy: Dr. Rudolph F. Crew, David L. Pickett, Sarah C. Robertson, Bartholomew A. Sheehan III, and Axel Stawski.

We thank Mayor Bill de Blasio and the New

York City Department of Cultural Affairs, led by Commissioner Tom Finkelpearl. We also salute the New York City Council, including Council Speaker Melissa Mark-Viverito, Finance Committee Chair Julissa Ferreras, Cultural Affairs Committee Chair Jimmy Van Bramer, the Brooklyn Delegation of the Council, Council Member Laurie Cumbo, and Brooklyn Borough President Eric L. Adams.

Once again, it has been my privilege to have chaired the board during this time of growth. BAM couldn't be the lively cultural hub it is without the support and involvement of so many.

Alan H. Fishman, Chairman of the Board



# Hello,

The impossibility of summarizing a year in the life of BAM is one of the many problems we feel lucky to have as its stewards.

But there are some constants. The Next Wave keeps expanding (the 2013 edition clocked in as the largest yet, beating 2012 by one production, for 34 in total). And we keep surprising and delighting our audiences, with a variety of programming unmatched anywhere in the US. What other festival could open with the contemporary, genre-expanding opera *Anna Nicole* and close with an intimate one-woman performance of Coleridge's lyric poem *The Rime of the Ancient Mariner* by the incomparable Fiona Shaw? Two utterly distinct performance events connected by their virtuosic delivery, both embodying the adventurous spirit that makes BAM a creative home for so many diverse artists.

The 2013 NWF was also notable for turning BAM into a home base for the dance community in the month of October, with an embarrassment of riches ranging from Guggenheim Fellow Brian Brooks' debut in the BAM Fisher to the Iconic Artist double-header of William Forsythe and Anna Teresa De Keersmaeker in the Howard Gilman Opera House (with *Sider* and *En Atendant & Cesena*, respectively).

Winter/Spring 2014 was a historic season of successive creative high-water marks, one that brought the likes of Mikhail Baryshnikov, Willem Dafoe, Frank Langella, and Isabella Rossellini to assorted BAM stages. Opera critics and audiences alike swooned for *Billy Budd*, and the Young Vic's fast-paced, thrilling production of Carrie Cracknell's interpretation of Ibsen's *A Doll's House* won universal acclaim.

Closing out the mainstage season, the inaugural year of our partnership with WNYC for RadioLoveFest was a hit from the start, a galvanizing example of institutional synergy at its best. And finally, BAMcinématek continues to go from strength to strength, with *Time Out NY* awarding it Best Film Series of 2013 for a banner year that included major repertory series *The Hitchcock 9*, *Vengeance is Hers*, *A Time for Burning: Cinema of the Civil Rights Movement*, and a complete retrospective of John Cassavetes. BAMcinemaFest 2014 was the biggest yet, opening with the New York premiere of Richard Linklater's award-winning *Boyhood* and closing with the 25th anniversary of Spike Lee's *Do the Right Thing*, featuring Lee and cast in person.

We'd be remiss if we didn't acknowledge Karen's impending retirement. The story of Karen's departure, announced in February, has

put the Brooklyn arts renaissance and BAM's role in the spotlight as never before. We quote our dear friend and colleague Darren Walker, president of the Ford Foundation, from *The New York Times* story about the news: "When Karen started at BAM, Brooklyn wasn't hot... now Brooklyn is hot, in large part because of BAM."

We couldn't have said it better ourselves.

Sincerely,

Karen Brooks Hopkins, President

Joseph V. Melillo, Executive Producer

Photo: Kristine Bumphrey, Starpix

# BAM VENUES



BAM Harvey Theater | Photo: Ned Witrogen



BAM Howard Gilman Opera House | Photo: Elliott Kaufman

AS THE  
COUNTRY'S  
OLDEST  
PERFORMING  
ARTS  
INSTITUTION,  
BAM HAS  
BEEN  
CENTRAL  
TO LIFE IN  
NEW YORK  
FOR OVER 150  
YEARS.



Judith & Alan Fishman Space | Photo: Francis Dzikowski

## BAM HARVEY THEATER

BAM Harvey Theater  
Campbell Lobby

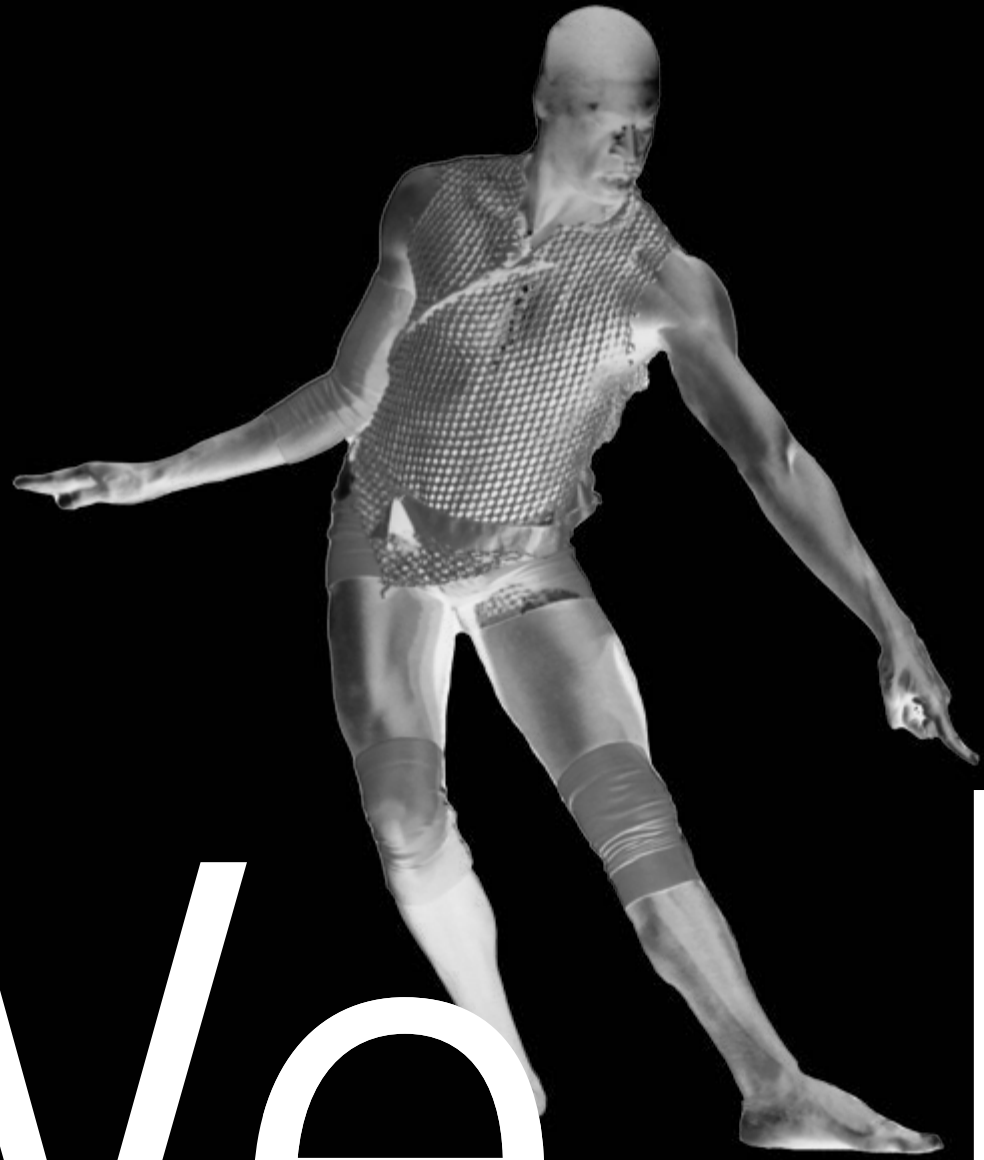
## PETER JAY SHARP BUILDING

BAM Howard Gilman Opera House  
BAM Rose Cinemas  
Lepercq Space (BAMcafé)  
Hillman Attic Studio  
Dorothy W. Levitt Lobby  
Hillman Penthouse Studio  
Diker Gallery Café  
Natman Lounge

## BAM FISHER

Judith and Alan Fishman Space  
Rita K. Hillman Studio  
Geraldine Stutz Gardens  
Max Leavitt Theater Workshop  
Samuel H. Scripps Stage  
Peter Jay Sharp Lobby

WHAT WE DO



We Do

Moses(es) | 2013 Next Wave | Photo: Julieta Cervantes

# 2013

# Next Wave

# Festival

BAM/New York City Opera's co-production of *Anna Nicole* turned heads, and music's breadth expanded in *Documerica*, a musical travelogue by ETHEL, and in Gary Lucas' Chinese 1940's pop stylings, Fred Ho's tribute to Muhammad Ali, and an ode to Bach's Goldberg Variations/Rube Goldberg. *Electronium's* eclectic musicians were chosen by Questlove/Richard Nichols, *War Sum Up* by Hotel Pro Forma dazzled visually and vocally, and a formidable collection of art songs came together in *21c Liederabend, Op. 3*.

Dance was robustly represented by Bill T. Jones/Arnie Zane/Anne Bogart's *A Rite*, William Forsythe's *Sider*, David Dorfman's *Come, and Back Again*, Anna Teresa De Keersmaecker's sublime *En Atendant* and *Cesena*, and Reggie Wilson's haunting *Moses(es)*. Ballet Preljocaj brought the epic *And then, one thousand years of peace*, and Hofesh Shechter stunned audiences with *Sun*. Talented choreographers who transformed the BAM Fisher were Brian Brooks, Kate Weare, Tere O'Connor, John Heginbotham, and Doug Varone/Brenda Angiel Aerial Dance's collaboration for DanceMotion USA<sup>SM</sup>.

Robert Lepage led off the varied theater offerings with *The Blue Dragon*. Jem Cohen's *We Have an Anchor* combined exquisite visuals and music, and *Hans Was Heiri*, by Zimmermann & de Perrot, astonished with daring physical antics. Alexandre Singh's *The Humans* garnered buzz with its ambition and visual wit, Annie Dorsen and an algorithm transformed *Hamlet* in real time, Frances McDormand channelled Suzanne Bocanegra in a bodycast, and Fiona Shaw performed in a spare, inventive *The Rime of the Ancient Mariner* for a memorable season.

BAM ICONS  
AND FRESH  
FACES OFFERED  
A RICHLY  
TEXTURED  
FESTIVAL





# 2013 NEXT WAVE FESTIVAL



*Anna Nicole* | Photo: Stephanie Berger



*We Have an Anchor* | Photo: Ed Lefkowitz



*En Atendant/Cesena* | Photo: Stephanie Berger



*DanceMotion USA<sup>SM</sup>/Brenda Angiel* | Photo: Rebecca Greenfield

BAM and New York City Opera present

## **ANNA NICOLE**

Composed by Mark-Anthony Turnage

Libretto by Richard Thomas

Directed by Richard Jones

Conducted by Steven Sloane

SEP 17—28

## **THE BLUE DRAGON**

Ex Machina

By Marie Michaud and Robert Lepage

Directed by Robert Lepage

SEP 18—21

## **THE TABLE**

Karbido

SEP 19—22

## **NOT WHAT HAPPENED**

Pick Up Performance Co(s)

Conceived and written by Ain Gordon

Directed by Ken Rus Schmoll

SEP 25—29

## **WE HAVE AN ANCHOR**

Jem Cohen

Presented in association with  
Wordless Music

SEP 26—28

## **DOCUMERICA**

ETHEL

Directed by Steve Cosson

Music by Mary Ellen Childs, Ralph Farris,  
Kip Jones, Dorothy Lawson, Ulysses  
Owens Jr., Jerod Impichchaachaaha' Tate,  
Tema Watstein, James Kimo Williams

OCT 2—5

## **A RITE**

Bill T. Jones/Arnie Zane Dance Company &  
SITI Company

Conceived, directed, and choreographed by  
Anne Bogart, Bill T. Jones, and Janet Wong

OCT 3—5

## **THE EDGE OF HEAVEN**

Gary Lucas

OCT 4 & 5

## **SIDER**

A work by William Forsythe and  
The Forsythe Company

Music by Thom Willems

OCT 9—12

## **THE SWEET SCIENCE SUITE: A SCIENTIFIC SOUL MUSIC HONORING OF MUHAMMAD ALI**

Conceived and composed by Fred Ho

Green Monster Big Band

Choreography by Fred Ho and  
Emmanuel Brown

OCT 11 & 12

## **COME, AND BACK AGAIN**

David Dorfman Dance

Choreography by David Dorfman and  
the company

OCT 16—19

## **GOLDBERG'S VARIATIONS**

Music and animation by Andy Biskin

Cartoons by Rube Goldberg

OCT 17—19

## **DANCEMOTION USA<sup>SM</sup>**

Doug Varone and Dancers &  
Brenda Angiel Aerial Dance Company

OCT 10—13

## **EN ATENDANT**

Choreography by

Anne Teresa De Keersmaecker and Rosas

## **CESENA**

Choreography by

Anne Teresa De Keersmaecker

Musical direction by Björn Schmelzer

Rosas and graindelavoix

OCT 19—20

## **RUN DON'T RUN**

Brian Brooks Moving Company

Choreography by Brian Brooks

OCT 22—26

## **HANS WAS HEIRI**

Zimmermann & de Perrot

OCT 23—26

## **ELECTRONIUM: THE FUTURE WAS THEN**

Produced by BAM

In association with Questlove  
and Richard Nichols

OCT 25 & 26

# 2013 NEXT WAVE FESTIVAL



War Sum Up | Photo: Jack Vartoogian

## DARK THEATER

Dance Heginbotham

Choreography by John Heginbotham

OCT 29—NOV 2

## NOSFERATU

Inspired by Bram Stoker's *Dracula*

TR Warszawa and Teatr Narodowy

Written and directed by Grzegorz Jarzyna

OCT 30—NOV 2

## WAR SUM UP

### MUSIC. MANGA. MACHINE.

Hotel Pro Forma

Vocals by Latvian Radio Choir

Directed by Kirsten Dehlholm

NOV 1 & 2

## AN ENEMY OF THE PEOPLE

By Henrik Ibsen

In a version by Florian Borchmeyer

Schaubühne am Lehniner Platz

Directed by Thomas Ostermeier

NOV 6—10



21c Liederabend, Op. 3 | Photo: Rebecca Greenfield

## DARK LARK

Kate Weare Company

Choreography by Kate Weare

NOV 6—9

## AND THEN, ONE THOUSAND YEARS OF PEACE

Ballet Preljocaj

Choreography by Angelin Preljocaj

NOV 7—9

## WATER

Filter Theatre & Lyric Hammersmith

Created by Filter Theatre and David Farr

NOV 13—17

BAM and PERFORMA present

## THE HUMANS

Witte de With Center for Contemporary Art

Written and directed by Alexandre Singh

NOV 13—17

## SUN

Hofesh Shechter Company

Choreography and music by

Hofesh Shechter

NOV 14—16



The Humans | Photo: Richard Termine

## PLAY/PAUSE

Susan Marshall & Company

Music by David Lang

NOV 20—23

## LA BELLE ET LA BÊTE

Lemieux Pilon 4D Art

Created and directed by Michel Lemieux and Victor Pilon

Created and written by Pierre Yves Lemieux

NOV 21—23

## 21C LIEDERABEND, OP. 3 Festival of Contemporary Art Song

Creative direction by Beth Morrison and Paola Prestini

Music direction by Julian Wachner

Featuring NOVUS NY, The Choir of Trinity Wall Street, and New York's finest solo singers

NOV 22 & 23



Moses(es) | Photo: Julieta Cervantes

## BODYCAST: AN ARTIST LECTURE BY SUZANNE BOCANEGRA STARRING FRANCES McDORMAND

Directed by Paul Lazar

DEC 3—7

## MOSES(ES)

Reggie Wilson/Fist & Heel Performance Group

Choreography by Reggie Wilson

DEC 4—7

## THE RIME OF THE ANCIENT MARINER

By Samuel Taylor Coleridge

Directed by Phyllida Lloyd

DEC 10—22

## BLEED

Tere O'Connor Dance

Choreography by Tere O'Connor

DEC 11—14

## A PIECE OF WORK

A machine-made *Hamlet* by Annie Dorsen

DEC 18—21

# 2014

# Winter/Spring Season



## THE SEASON FEATURED MAJOR THEATRICAL EVENTS AND SPECTACLES

The season brought several major theatrical events and spectacles. Frank Langella harrowingly embodied King Lear in a Chichester Festival Theater production, while Isabella Rossellini expounded on various creatures' reproductive habits in *Green Porno*. The Young Vic's *A Doll's House*, featuring Hattie Morahan, thrilled packed houses, as did Mikhail Baryshnikov and Willem Dafoe in Robert Wilson's *The Old Woman* by Daniil Kharms.

Britten's opera *Billy Budd* sailed onto the Opera House stage in Glyndebourne Festival Opera's highly praised production. Artist Matthew Barney's five-hour film extravaganza, *River of Fundament*, ran at the Harvey Theater on the vast Steinberg Screen. Lyon Opera Ballet performed the provocative *ni fleurs, ni ford-mustang* by Christian Rizzo, and Cedar Lake Contemporary Ballet showed its dazzling technique in varied repertory. *DanceAfrica 2014* featured Madagascar's Groupe Bakomanga alongside the effervescent BAM/Restoration DanceAfrica Ensemble.

Music offerings included concerts by Nonesuch artists Emmylou Harris and Carolina Chocolate Drops, whose bill included the premiere of a duet by Twyla Tharp danced by Tiler Peck and Robert Fairchild. And in another fruitful partnership, BAM and WNYC produced RadioLoveFest, featuring live performances of radio programs and podcasts, plus curated screenings and live music.

Willem Dafoe and Mikhail Baryshnikov in *The Old Woman*  
Photo: Pavel Antonov

# 2014 WINTER/SPRING SEASON



Lauren O'Neil and Frank Langella in *King Lear*  
Photo: Richard Termine



*Billy Budd* | Photo: Richard Termine



Dominic Rowan and Hattie Morahan in *A Doll's House*  
Photo: Richard Termine



Groupe Bakomanga | Photo: Dino Perrucci

## KING LEAR

By William Shakespeare  
Chichester Festival Theatre  
Directed by Angus Jackson  
JAN 7—FEB 9

## GREEN PORNO

Conceived and performed by  
Isabella Rossellini

Written by Isabella Rossellini and  
Jean-Claude Carrière

Staged by Muriel Mayette

JAN 16—25

## 28TH ANNUAL BROOKLYN TRIBUTE TO DR. MARTIN LUTHER KING, JR.

Keynote: Angela Davis

Performers: José James  
The Christian Cultural Center Choir

JAN 21

## BILLY BUDD

By Benjamin Britten  
Glyndebourne Festival Opera  
London Philharmonic Orchestra  
The Glyndebourne Chorus  
Conducted by Sir Mark Elder  
Directed by Michael Grandage  
FEB 7—13

## RIVER OF FUNDAMENT

A film by Matthew Barney and  
Jonathan Bepler

Produced by Matthew Barney  
and Laurenz Foundation

FEB 12—16

## A DOLL'S HOUSE

By Henrik Ibsen  
English language version by  
Simon Stephens  
Young Vic  
Directed by Carrie Cracknell  
FEB 21—MAR 23

## NONESUCH AT BAM

CAROLINA CHOCOLATE DROPS  
WITH TWYLA THARP  
APR 10

EMMYLOU HARRIS & DANIEL LANOIS:  
WRECKING BALL  
APR 12

## LYON OPERA BALLET

*ni fleurs, ni ford-mustang*

Christian Rizzo  
MAY 7—9

## DANCEAFRICA 2014

Artistic Director Chuck Davis

*OPENING CELEBRATION*  
Groupe Bakomanga  
Madagascar Slim  
Hanitrarivo Rasoanaivo  
BAM/Restoration DanceAfrica Ensemble

MAY 18

*CELEBRATING AFRICA'S BANTABA*  
Groupe Bakomanga  
Asase Yaa African-American Dance  
Theatre  
AACC Dance & Drum Performance Co.  
BAM/Restoration DanceAfrica Ensemble  
MAY 23—26

# 2014 WINTER/SPRING SEASON



Cedar Lake Contemporary Ballet | Photo: Julieta Cervantes



Green Porno | Photo: Rebecca Greenfield



This American Life | Photo: Julieta Cervantes



Radiolab® Trusts No One | Photo: Julieta Cervantes

## CEDAR LAKE CONTEMPORARY BALLET

10th Anniversary Celebration

Program A: *Orbo Novo* by Sidi Larbi Cherkaoui

Program B: *Violet Kid* by Hofesh Shechter; *Tuplet* by Alexander Ekman; *Necessity, Again* by Jo Strømngren

Program C: *Grace Engine* by Crystal Pite; *Tuplet* by Alexander Ekman; *Necessity, Again* by Jo Strømngren

JUN 11—14

## THE OLD WOMAN

Direction, set design, and lighting concept by Robert Wilson with Mikhail Baryshnikov and Willem Dafoe

Written by Daniil Kharms

Adapted by Darryl Pinckney

Music by Hal Willner

JUN 22—29

BAM and WNYC present

## RADIOLOVEFEST

Produced by BAM and WNYC

*RADIOLAB® TRUSTS NO ONE*, JUN 4

*WAIT WAIT... DON'T TELL ME!®*

NPR®, JUN 5

*VOICES CARRY: STORIES OF INSIDE FREQUENCIES*

*THE MOTH RADIO HOUR LIVE*, JUN 5

*ASK ME ANOTHER®*

NPR® and WNYC®, JUN 6

*STUDIO 360® WITH*

*KURT ANDERSEN*, JUN 6

*THIS AMERICAN LIFE: ONE NIGHT*

*ONLY AT BAM*, JUN 7

*SOUNDCHECK®*, JUN 7

*STORYCORPS LISTENING STATION*, JUN 5—8

*SUNDAY IN NEW YORK WITH JONATHAN SCHWARTZ*, JUN 8

FILMS IN BAM ROSE CINEMAS

CURATED BY

BROOKE GLADSTONE, JUN 8

BRIAN LEHRER, JUN 4 & 5

BAMCAFÉ LIVE

CURATED BY TERRANCE MCKNIGHT

VILLALOBOS BROTHERS, JUN 6

BROWN RICE FAMILY, JUN 7

TALK: DAVE ISAY WITH

GUEST SCOTT SIMON, JUN 8

## OTHER EVENTS

*FRAN LEBOWITZ IN CONVERSATION WITH MARTIN SCORSESE*, JAN 19

*STARTALK LIVE! WITH NEIL DEGRASSE TYSON, CO-HOSTED BY EUGENE MIRMAN WITH MAYIM BIALIK AND OTHER SPECIAL GUESTS*, FEB 24

*DAVID LYNCH IN CONVERSATION WITH PAUL HOLDENGRÄBER*, APR 29

BAM, Luaka Bop and Red Bull Music Academy present

*ATOMIC BOMB! THE MUSIC OF WILLIAM ONYEABOR*

MAY 2 & 3

# BAM Rose Cinemas



BAM ROSE CINEMAS, SCREENING FIRST-RUN, INDEPENDENT, AND FOREIGN FILMS, IS A FAVORITE DESTINATION FOR CINEPHILES CITYWIDE.

BAMcinématek is the only daily repertory film program of its kind in Brooklyn, with special guests augmenting its wide variety of series focusing on directors and curated themes. The annual BAMcinemaFest offered new films by emerging talent.

This year, audiences and revenue grew. More than 250,000 viewers attended films and events, producing over \$2.9 million in ticket sales.

The cinemas also screened performances of the Met Live in HD, as well as National Theatre Live productions from London.

*Stations of the Elevated* | Photo courtesy Artists Public Domain

# BAM ROSE CINEMAS

## FIRST-RUN FILMS



*Gravity* | Photo courtesy of Warner Bros.



*The Grand Budapest Hotel* | Photo courtesy of Fox Searchlight Pictures



*Fruitvale Station* | Photo courtesy of The Weinstein Company



*Only Lovers Left Alive* | Photo courtesy of Sony Pictures Classics

### 2013

BEFORE MIDNIGHT  
FRANCES HA  
MUCH ADO ABOUT NOTHING  
THE WAY, WAY BACK  
20 FEET FROM STARDOM  
ONLY GOD FORGIVES  
FRUITVALE STATION  
BLUE JASMINE  
THE SPECTACULAR NOW  
THE WORLD'S END  
THE GRANDMASTER

MOTHER OF GEORGE  
ENOUGH SAID  
GRAVITY 3D  
12 YEARS A SLAVE  
BLUE IS THE WARMEST COLOR  
NEBRASKA  
INSIDE LLEWYN DAVIS  
AMERICAN HUSTLE  
THE WOLF OF WALL STREET  
HER

### 2014

OSCAR-NOMINATED ANIMATED SHORTS  
OSCAR-NOMINATED LIVE-ACTION SHORTS  
THE WIND RISES  
THE GRAND BUDAPEST HOTEL  
THE LUNCHBOX  
UNDER THE SKIN  
ONLY LOVERS LEFT ALIVE  
FADING GIGOLO

BELLE  
CHEF  
THE IMMIGRANT  
OBVIOUS CHILD  
JERSEY BOYS

# BAM ROSE CINEMAS

BAMCINÉMATEK



*The Scarlet Empress* | Photo courtesy Paramount/Photofest



*Come Drink With Me* | Photo courtesy Shaw Brothers/Photofest



*Do the Right Thing* | Photo courtesy MCA/Universal/Photofest



*The Young Girls of Rochefort* | Photo courtesy Warner Bros/Photofest

*Series followed by special guests.*

BIG SCREEN EPICS 2013

CASSAVETES

SUNDANCE SHORTSLAB

Alex Karpovsky, Mike Ryan, Melody London,  
Jody Lee-Lipes, Cutter Hodierne, Rashaad  
Ernesto Green, Eliza Hittman

ANIMATION WEEKEND

SNEAK PREVIEW: PRINCE AVALANCHE

David Gordon-Green

THE BLUES ACCORDIN' TO LES BLANK

US PREMIERE: JAMEL SHABAZZ

STREET PHOTOGRAPHER

Charlie Ahearn, Jamel Shabazz, Fab 5 Freddy,  
Bobbito Garcia, Dave Chino Villorrente, Sharp

Dexter Wimberly, Alyse Archer-Coite

DOIN' IT IN THE PARK

CHAPLIN IN 35MM

A TIME FOR BURNING: CINEMA OF THE CIVIL  
RIGHTS MOVEMENT

D. A. Pennebaker

Darryl Pinckney, Rich Blint

Madeline Anderson

THE THREE FLAVORS CORNETTO TRILOGY

Edgar Wright, Simon Pegg, Nick Frost,  
Clark Collis

ENTER THE DRAGON + 5 WING CHUN CLASSICS

SERGE BROMBERG TREASURES

SKATEBOARDING IS NOT A CRIME

George Gage, Helen Stickler, Argyris  
Papadimitropoulos, Robert McGinley

MARLENE GOES WEST

ALFRED HAYES, SCREENWRITER

AN EVENING WITH PETER RAINER:

REAR WINDOW

Peter Rainer

I AM DIVINE

Jeffrey Schwarz, Dennis Dermody, Michael  
Musto, Jay Bennett, Beverly Bonner, Zach Clark

CHARLES BRADLEY: SOUL OF AMERICA

DOG DAY AFTERNOON

FORBIDDEN PLANET

Matthew Buchholz

CASSAVETES REDUX

APOCALYPSE: A BILL CALLAHAN TOUR FILM

Bill Callahan

THE BEAST WITH FIVE FINGERS

TROUBLE EVERY DAY

Tricia Vessay

AMERICAN PROMISE

Joe Brewster, Michèle Stephenson

KAREN BLACK

PUPPETS ON FILM

Rick Moranis

DERN & BLACK

2 BY NORMAN MAILER: MAIDSTONE & UNTITLED

MORRICONE YOUTH: ALFRED HITCHCOCK'S

THE LODGER

Septet Morricone Youth

NORDIC NOIR: KJELL SUNDVALL

Kjell Sundvall, David D'Arcy

MARTIN AMIS PRESENTS ROMAN POLANSKI'S

MACBETH

Martin Amis

BOBCAT GOLDTHWAITE

Bobcat Goldthwaite

OVERDUE

INDEPENDENT OF REALITY: THE FILMS OF  
JAN NEMEC

HOT DERN! & AN EVENING WITH

BRUCE DERN

Bruce Dern, Josh Rothkopf

KID STUFF

OF FREAKS AND MEN: THE FILMS OF

ALEKSEI BALABANOV

HER

Spike Jonze

STALKER

ANIMATION BLOCK PRESENTS: LATE NIGHT  
WORK CLUB

ROSSELLINI X 2

Isabella Rossellini, A.S. Hamrah

PETER BROOK: THE TIGHTROPE

Peter Brook, Simon Brook

VENGEANCE IS HERS

Wayne Koestenbaum



# BAM ROSE CINEMAS

BAMCINÉMATEK



*Coffy* | Photo courtesy AIP/Photofest



*The Little Shop of Horrors* | Photo courtesy Warner Bros/Photofest



*The King of Marvin Gardens* | Photo courtesy Columbia/Photofest



*Cool World* | Photo courtesy Paramount/Photofest

## KINO POLSKA: NEW POLISH CINEMA

Maciej Pieprzyca, Dawid Ogrodnik,  
Jowita Budnik

## BLACK AUDIO FILM COLLECTIVE

MARKETA LAZAROVA

## RENDEZ-VOUS WITH FRENCH CINEMA

Justine Triet, Arthur Harari, Jean-Paul Salomé,  
François Ozon, Géraldine Pailhas, Rebecca  
Zlotowski, Jacques Doillon, Michel Gondry

## HIDE YOUR SMILING FACES

Daniel Patrick Carbone, Nick Bentgen,  
Ryan Jones, Nathan Varnson

## UNDER THE INFLUENCE: SCORSESE/WALSH

## THE MUSIC OF MORRICONE

## NEW VOICES IN BLACK CINEMA

Tommy Oliver, John Sayles, Hill Harper,  
Troi Zee, Joe Morton

## JONATHAN GLAZER

Jonathan Glazer

## BLONDE VENUS: THE FILMS OF DIETRICH & VON STERNBERG

## UNBOUND: ANDY VOTEL'S KLEKSPLOITATION

Andy Votel, Piotr Kurek

## JOE

David Gordon Green

## THE YOUNG GIRLS OF ROCHEFORT

## SCIENCE ON SCREEN

Joseph LeDoux, Jon Mooallem, Sonia Shah

## FADING GIGOLO

John Turturro

## BACK WITH A VENGEANCE

## TARNATION: 10TH ANNIVERSARY

Jonathan Caouette, John Cameron Mitchell

## BLUE RUIN

Jeremy Saulnier

## FOUND FOOTAGE FESTIVAL

Joe Pickett, Nick Prueher

## PALO ALTO

Gia Coppola, Nat Wolff, Devonté Hynes

## ELLEN BURSTYN

Ellen Burstyn

## THE IMMIGRANT

James Gray

## PUNK ROCK GIRLS

Lukas Moodysson, Slava Tsukerman,  
Anne Carlisle

## ANIMATION BLOCK PRESENTS FREDERATOR

Fred Seibert

## COOL WORLDS: THE ANIMATION OF

RALPH BAKSHI

Ralph Bakshi

## PSYCHIC TV: DREAMS LESS SWEET

Genesis Breyer P-Orridge

## FILMAFRICA

## AN EVENING WITH JACOLBY SATTERWHITE

AND ART21

Jacolby Satterwhite

## PREVIEW: OBVIOUS CHILD

Gillian Robespierre, Jenny Slate

## CROSSING DELANCEY

Jenny Slate, Gillian Robespierre

## THE LORD OF THE RINGS

## ALL HAIL THE KING: THE FILMS OF KING HU

## THE GOOD, THE BAD AND THE UGLY

# BAM ROSE CINEMAS

BAMCINEMAFEST



Boyhood actor Ellar Coltrane and director Richard Linklater, opening night of BAMcinemaFest | Photo: Godlis

*Films followed by special guests.*

## OPENING NIGHT

BOYHOOD  
Richard Linklater, Ellar Coltrane

## CENTERPIECE

SNOWPIERCER  
Bong Joon Ho, John Hurt

## SPOTLIGHT SCREENINGS

THEY CAME TOGETHER  
David Wain, Amy Poehler, Paul Rudd

STATIONS OF THE ELEVATED

YUM YUM YUM! 3 MOVIES BY LES BLANK

## FEATURES

APPROPRIATE BEHAVIOR  
Desiree Akhavan

WILD CANARIES  
Lawrence Michael Levine, Sophia Takal,  
Annie Parisse

KUMIKO  
David Zellner, Nathan Zellner, Chris Ohlson

ELLIE  
Ignatij Vishnevetsky

THE HEART  
Zachary Wigon, Kate Lyn Sheil

FOR THE PLASMA  
Bingham Bryant, Kyle Molzan

APPROACHING  
Amanda Rose Wilder

THE MEND  
John Magary, Josh Lucas

MEMPHIS  
Tim Sutton

EVOLUTION  
Darius Clark Monroe

THOU WAST  
Josephine Decker

HAPPY VALLEY  
Amir Bar-Lev

I ORIGINS  
Mike Cahill

THE NOTORIOUS  
Tony Gerber, Maxim Pozdorovkin

L FOR LEISURE  
Lev Kalman, Whitney Horn

SOMETHING, ANYTHING  
Paul Harrill, Ashley Shelton

OTHER MONTHS  
Nick Singer, Chris Bonewitz, Justin Zweifach

HAPPY CHRISTMAS  
Joe Swanberg

THE FOXY  
Madeleine Olnek

LIFE AFTER DEATH  
Joe Callander

LOW DOWN  
Jeff Preiss

10.000KM  
Carlos Marques-Marcet, Natalia Tena

## CLOSING NIGHT

DO THE RIGHT THING  
Spike Lee, Danny Aiello, Rosie Perez

# BAM ROSE CINEMAS

HD SCREENINGS



*Of Mice and Men* | Photo: National Theatre



*Falstaff* | Photo: Catherine Ashmore

## THEATER IN HD

Filmed performances of plays in high definition were broadcast via satellite from London's National Theatre, West End Theatre, the Young Vic, and also Broadway, to cinemas all over the world, including BAM.

MEDEA  
A STREETCAR NAMED DESIRE  
SKYLIGHT  
JOHN  
TREASURE ISLAND  
OF MICE AND MEN

## THE MET: LIVE IN HD

The Met: Live in HD screened high-definition transmissions of the Met Opera's famous repertory, featuring the world's finest singers in thrilling live and encore performances. BAM presented pre-screening discussions led by opera experts Fred Plotkin and Marc Scorca at BAM Rose Cinemas.

EUGENE ONEGIN  
THE NOSE  
TOSCA  
FALSTAFF  
RUSALKA  
PRINCE IGOR  
WERTHER  
LA BOHÈME  
COSÌ FAN TUTTE  
LA CENERENTOLA

# BAMcafé



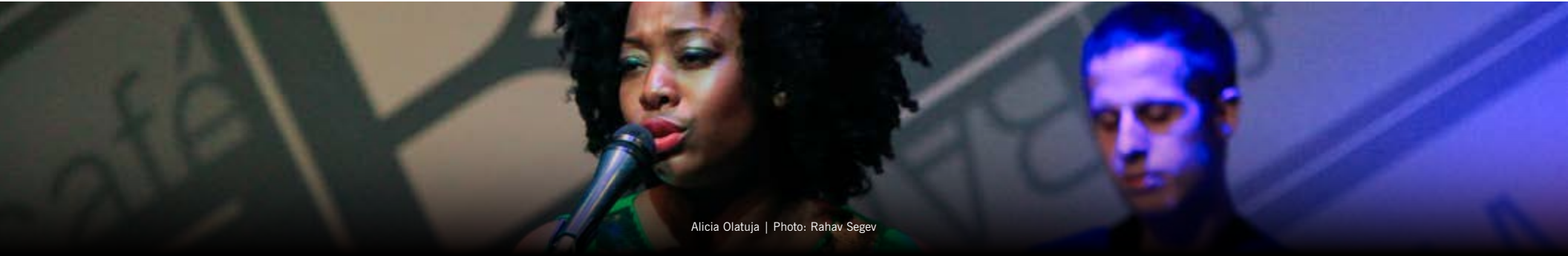
## BAMCAFÉ LIVE —TERRIFIC, ECLECTIC MUSIC

BAMcafé Live drew crowds for musical luminaries including Olga Bell (*Dirty Projectors*), Margot B (*Boardwalk Empire*), Judith Owen & Harry Shearer, *The Irrepressibles*, Will Calhoun (*Living Colour*), Onaje Allen Gumbs, Kendra Morris (*D'Angelo & The Vanguard*), RES, and an all-star salute to Amiri Baraka. As

part of BAM's partnership with WNYC—RadioLoveFest—BAMcafé Live presented Alicia Olatuja and Brown Rice Family, curated by WQXR's Terrance McKnight. BAMcafé Live featured 72 evenings of programming with an average attendance of more than 300.

Brown Rice Family at BAMcafé Live | Photo: Julieta Cervantes

# BAMCAFÉ LIVE



Alicia Olatuja | Photo: Rahav Segev

## 2013

### SEP

Olga Bell  
Heliotropes  
Wishes and Thieves  
Margot B

### OCT

Hank & Cupcakes  
International Blues Express:  
Cedric Watson and Sidi Touré  
Gordon Chambers  
Magos Herrera  
Claudia Acuña  
Numinous  
AMERICAN CANDY  
DJ Jeannie Hopper

### NOV

The Irrepressibles  
JENNY OWEN YOUNGS  
The Mala Waldron Project  
Kidding on the Square

Tai Allen's Tribute to Oscar Lee Brown  
Water Seed  
Earl McIntyre's 60th Birthday Extravaganza  
Akim Funk Buddha: Hip-Hop Holiday

### DEC

Eugene Marlow's Heritage Ensemble  
Judith Owen and Harry Shearer's  
Holiday Sing-Along  
The Will Calhoun Trio  
The GrooveBarbers' A Capella  
Holiday Concert  
The Sway Machinery  
TamarRaqs Winter Solstice Hafla  
Charanga Soleil

## 2014

### JAN

Ayanna Lee  
Mary Halvorson Quintet  
Miguel Anggelo  
Threfifty  
Onaje Allan Gumbs & New Vintage  
Elisabeth Lohninger

### FEB

Scrapomatic  
Russell Taylor  
Soulfolk Experience  
The Eric Wyatt Quartet  
Akie Berniss  
Beatrhyne Communications

### MAR

Angela Johnson  
Marika Hughes & Bottom Heavy  
Kendra Morris  
Common Thread featuring  
Gabrielle Walter-Clay  
Divinity Roxx  
SLV  
Sara Serpa & André Matos  
White Prism  
The New Cookers

### APR

FRO  
RES  
Victor V. Gurbo

Chris Rob  
Oscar Peñas  
Trio Feral  
Mad Satta  
The Smyrk with special guest  
Mike Falzone

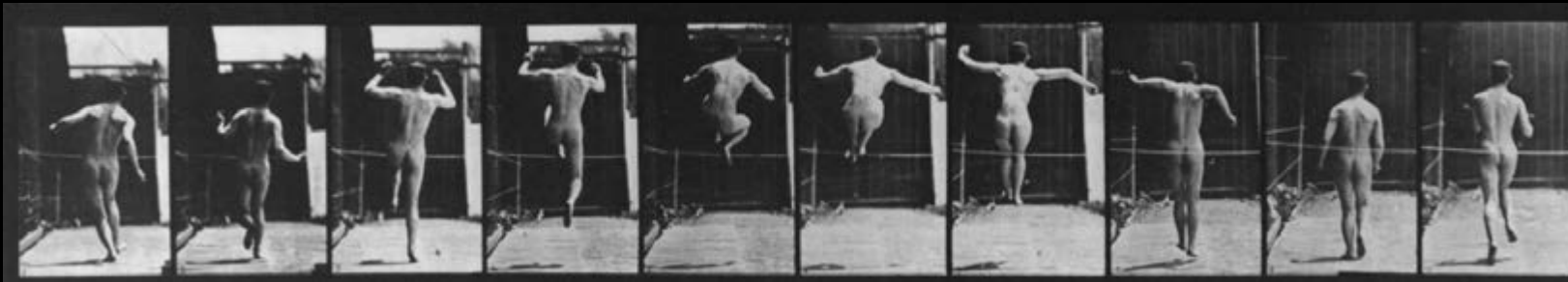
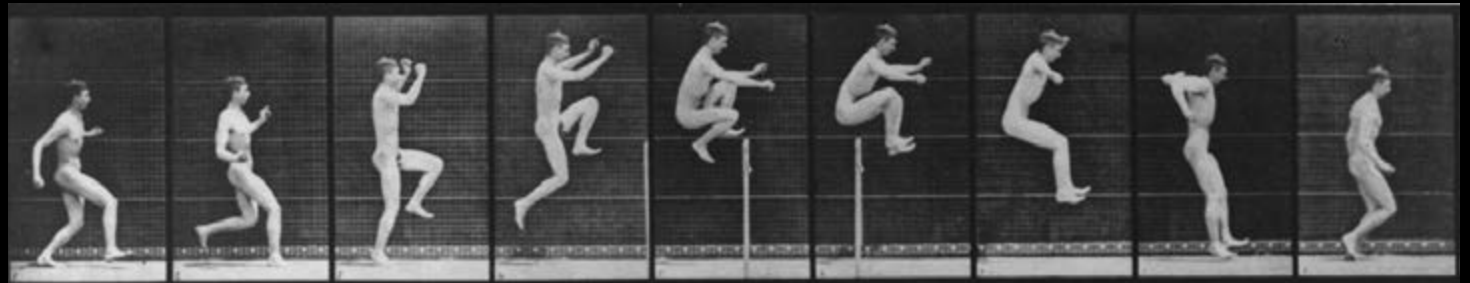
### MAY

Al MacDowell's Just Ornette Quartet  
Juancho Herrera  
Jus Post Bellum  
Brooklyn Arts Council Program  
pILLOW tHEORY  
Amiri Baraka Tribute  
DanceAfrica: THE EARTHMAN EXPERIENCE  
featuring DJ Hard Hittin Harry  
DanceAfrica: Late Night Dance Party with  
DJ Ian Friday  
Jeremiah Hosea Trio  
Ursa Minor

### JUN

RadioLoveFest: Alicia Olatuja  
RadioLoveFest: Brown Rice Family

# BAM Hamm Archives



The BAM Hamm Archives serves artists, historians, students, art aficionados, and audiences. The collection is particularly strong in documenting contemporary performance materials including photos, posters, BAMbills, press clippings, brochures, and audio visual materials. The archives also holds treasures dating back to the 1860s.

With generous support from the Leon Levy Foundation, a digital repository—the Leon Levy Digital Archive—will launch in Spring of 2016. On this website BAM's global audience will be able to search everything

## A TREASURE TROVE OF BAM'S HISTORY —ARTIFACTS AND DIGITALLY

from 1861 newspaper clippings, to artist talks, to video clips from performances, and much more.

The Iconic Artist Talks, a collaboration between the archives and Education & Humanities, continue to showcase archival footage and images in a forum to discuss artists and their work, and also to explore the history of a work over time. The archives directs projects of institutional importance, such as oral histories, creating displays and exhibits, and contributing to BAM publications including the BAM Blog. The archives also provides tours of BAM.

The collection is temporarily located at 1000 Dean Street in Crown Heights, Brooklyn and is open by appointment during regular business hours.

Major support for the BAM Hamm Archives Center comes from Charles J. and Irene F. Hamm and the Leon Levy Foundation.

Photo: Eadweard Muybridge, courtesy BAM Hamm Archives

# Digital Media

BAM.org  
bam150years.blogspot.com  
BAM.org/video  
Facebook.com/BAMstage  
Twitter.com/BAM\_Brooklyn  
Instagram.com/BAM\_Brooklyn

A crowdsourced *Rime* and inaugural livestream events, plus hugely increased traffic on all platforms are highlights of BAM's digital presence

## WEB

Launched BAM.org Video Portal, with 21,000 page views

Launched Print-at-Home Ticketing

Created DanceMotion USA<sup>SM</sup> Tumblr

Launched auto-renewing memberships

Next Wave Festival page redesigned to optimize membership sales and subscriptions

Web sales channel 60% of BAM ticket revenue, up 11%

## SOCIAL MEDIA

Instagram had 25,000 followers, up 29%

Facebook followers grew by 52% to 74,000

Twitter followers grew by 44% to 75,000

### HIGHLIGHTS:

Record Your Rime, in conjunction with *The Rime of the Ancient Mariner*: uploaded recorded segments of the poem were edited and accompanied an illustrated animation.

BAM Danst Rosas—BAM staff participated in Anne Teresa De Keersmaecker's *Rosas Remix*

Live tweeted all Eat, Drink & Be Literary events

DanceAfrica Instagram Photobooth

All pics tagged #DanceAfrica were printed out at the Bazaar's BAM booth

Inaugural BAM livestream—*On Truth (and Lies) in Feminism* talk with Anne-Marie Slaughter and Simon Critchley

BAM Cup 2014—BAM artists from participating World Cup countries were matched in a tournament bracket

Behind-the-scenes social media coverage of cast members from *Billy Budd*

## VIDEO

### HIGHLIGHTS:

Produced *This American Life: Live at BAM* (the show's first direct-to-download video episode)

Launched David Lynch: "Where do ideas come from?"—45,000 views in two months

YouTube views: 472,000 (increase of 107,000)

Inaugurated for-hire video production

Archival video shoots: 60 mainstage, 37 education, 31 humanities events

# Get It

# Out There: Comedy by BAM & IFC

Get It Out There: Comedy by BAM & IFC is a comedy showcase that allows comics to experiment recklessly with humor while causing only minimal harm to themselves and others. Each free event features a handful of emerging comics testing out fresh material and probing the depths of their twisted souls for new forms of funny.

Sabrina Jalees at Get It Out There | Photo: Dino Perrucci

## LAUGHTER UNLIMITED, FOR FREE

### 2013

Aparna Nancherla, George Gordon,  
Jacqueline Novak, Beth Stelling

Hosted by Adam Newman

SEP 26

Sabrina Jalees, Ted Travelstead,  
Tom Shillue, Shane Torres

Hosted by Josh Gondelman

OCT 10

Phil Hanley, Sheng Wang, Joe Zimmerman,  
Christina Bianco, Reggie Watts

Hosted by Kara Klenk

OCT 24

Kevin Barnett, Nore Davis, Nate Fridson,  
Janelle James, Kurt Metzger

Hosted by Nick Vatterott

NOV 21

Wyatt Cenac, Selena Coppock,  
John Roberts, Nimesh Patel, Ali Wong

Hosted by Sean Patton

DEC 19

### 2014

Will Miles, Rob Cantrell,  
Joyelle Nicole, Gina Brillonn

Hosted by John Early

FEB 20

Todd Barry, Maeve Higgins,  
Ted Alexandro, Michelle Wolf

Hosted by Eli Yudin

MAR 27

H. Jon Benjamin, Adrienne Iapalucci,  
Michelle Buteau, Mike Drucker,  
Ben Lerman

Hosted by Greg Johnson

APR 24

Nikki Glaser, Rojo Perez,  
Joe List, Gina Yashere

Hosted by Jason Saenz

MAY 29

Claire Titelman, Subhah Agarwal,  
Kurt Metzger

Hosted by Jared Logan

JUN 12



# Education & Humanities



EDUCATION  
BAMKIDS  
HUMANITIES  
PROFESSIONAL DEVELOPMENT PROGRAM

The mission of BAM Education & Humanities is to ignite imagination and ideas through programs that enrich the audience experience, spark conversation, and generate creative engagement.

BAM Education connects learning with creativity, engaging imagination by encouraging self-expression through in- and after-school arts education programming, workshops for students and teachers, school-time performances, and comprehensive school-break arts programs.

BAM Humanities is a forum for adventurous ideas, providing context for the cultural experience of BAM and beyond. Artist talks, master classes, lecture and discussion series, and innovative literary programs facilitate engagement and discovery.

The Professional Development Program provides training and deeply discounted theater and rehearsal studio rentals to an annual selection of primarily Brooklyn-based nonprofit arts organizations. A

collaboration between BAM and the DeVos Institute of Arts Management at the Kennedy Center, with funding from the Brooklyn Community Foundation, the program focuses on different disciplines every year while striving to help selected organizations expand their skill base and build the foundations necessary for long-term success.

*RadioJungle* | Photo: Beowulf Sheehan

**BAM'S E&H  
PROGRAMS  
REACH MORE  
THAN 37,000  
PEOPLE  
ANNUALLY**

# EDUCATION / BAMKIDS & BAM EDUCATION



BAM Youth Summer Program | Photo: Beowulf Sheehan

## **BAMKIDS LIVE PERFORMANCES**

SHINE AND THE MOONBEAMS  
WEBOP® FAMILY JAZZ PARTY: FUN WITH DRUMS, PRODUCED BY JAZZ AT LINCOLN CENTER  
RADIO JUNGLE: THE POP UPS  
SLEEPING BEAUTY DREAMS  
PAIGE IN FULL: A B-GIRL'S VISUAL MIXTAPE  
CHARLIE'S KID  
THE CAT WHO WENT TO HEAVEN  
BEDTIME  
POETRY 2014: BIRTH OF A HIP-HOP NATION  
TIGER TALES

## **BAMKIDS MOVIE MATINEES**

PEE-WEE'S BIG ADVENTURE  
CHARLOTTE'S WEB  
WALLACE & GROMIT: THE CURSE OF THE WERE-RABBIT

SHADOW PUPPETS WORKSHOP  
TALES OF THE RIVERBANK  
THE SECRET GARDEN  
THE RED BALLOON + WHITE MAN  
E.T. THE EXTRATERRESTRIAL  
A CHRISTMAS STORY  
BAMKIDS FILM FESTIVAL  
PUPPETS ON FILM: SHORTSTACK

## **BAM YOUTH SUMMER PROGRAMS**

LITTLE LEGENDS: CREATIVE PLAY WITH MYTHS AND LEGENDS  
STYLE AND SUBSTANCE: CREATIVE WRITING WORKSHOP  
BARD IN BROOKLYN  
FROM SCRATCH: CREATING MUSICAL THEATER  
LEVEL UP: VIDEO GAME DESIGN

## **WORKSHOPS**

WEBOP®: GUMBO GROUP, PRODUCED BY JAZZ AT LINCOLN CENTER  
WEBOP®: STOMPERS, PRODUCED BY JAZZ AT LINCOLN CENTER  
THE LITTLE PRINCE: PLANETARY GARDENER

## **BAM EDUCATION**

### **LIVE PERFORMANCES/SCREENINGS**

DANCEMOTION USA<sup>SM</sup>  
4 LITTLE GIRLS  
HAMLET  
MOSES(ES)  
THE RIME OF THE ANCIENT MARINER  
FREEDOM RIDERS  
SLEEPING BEAUTY DREAMS  
KING LEAR  
A DOLL'S HOUSE  
PAIGE IN FULL: A B-GIRL'S VISUAL MIXTAPE  
CHARLIE'S KID

ROMEO + JULIET  
THE CENTRAL PARK FIVE  
THE CAT WHO WENT TO HEAVEN  
THE LITTLE PRINCE: PLANETARY GARDENER  
POETRY 2014: BIRTH OF A HIP-HOP NATION  
42  
DANCEAFRICA 2014

### **IN-SCHOOL RESIDENCIES & AFTER-SCHOOL PROGRAMS**

AFRICANDANCEBEAT  
ARTS & JUSTICE  
BROOKLYN INTERNS FOR ARTS AND CULTURE  
BROOKLYN READS  
DANCING INTO THE FUTURE  
SHAKESPEARE TEACHES STUDENTS  
SHAKESPEARE TEACHES TEACHERS  
YOUNG FILM CRITICS  
YOUNG SHAKESPEARE

# HUMANITIES



Jennifer Homans and William Forsythe | Photo: Kyle Dean Reinford

## TALKS

### THE MAKING OF *ANNA NICOLE*

In conjunction with *Anna Nicole*

Mark-Anthony Turnage, Richard Thomas, Richard Jones, and Aletta Collins

Moderated by Elaine Padmore

### ON TRUTH (AND LIES) IN BEAUTY

In conjunction with *Anna Nicole*

Co-presented by BAM and the Onassis Cultural Center NY

Hosted by Simon Critchley

Hilton Als and Alexander Nehamas

Brooklyn Book Festival

### ICONIC ARTIST TALK: ROBERT LEPAGE

In conjunction with *The Blue Dragon*

Moderated by Don Shewey

### *THE RITE OF SPRING* AT 100: A LOOK INTO THE BAM HAMM ARCHIVES

In conjunction with *A Rite*

Sharon Lehner and Simon Morrison

### ON BALLET

In conjunction with *Sider*

William Forsythe and Jennifer Homans

### ICONIC ARTIST TALK: ANNE TERESA DE KEERSMAEKER

In conjunction with *En Atendant & Cesena*

Moderated by Anna Kisselgoff

### ON CONTEMPORARY CIRCUS

In conjunction with *Hans was Heiri*

Duncan Hall

### ON VAMPIRES

In conjunction with *Nosferatu*

Joan Acocella

### ON TRUTH (AND LIES) IN DEMOCRACY

In conjunction with *Enemy of the People*

Co-presented by BAM and the Onassis Cultural Center NY

Hosted by Simon Critchley

Thomas Ostermeier

### ON TRUTH (AND LIES) IN GREEK COMEDY

In conjunction with *The Humans*

Co-presented by BAM and the Onassis Cultural Center NY

Hosted by Simon Critchley

Alexander Singh and Liesbeth Levy

### ON CLIMATE CHANGE

In conjunction with *Water*

David Farr and Daniel P. Schrag

Moderated by Robert Lee Hotz

### ON COLERIDGE

In conjunction with *The Rime of the Ancient Mariner*

Richard Holmes

### *KING LEAR*: A LOOK INTO THE BAM HAMM ARCHIVES

In conjunction with *King Lear*

James Shapiro and Sharon Lehner

### ON BENJAMIN BRITTEN

In conjunction with *Billy Budd*

Fred Plotkin

### FRIENDS OF BAM TALK: *A DOLL'S HOUSE*

In conjunction with *A Doll's House*

Carrie Cracknell

Moderated by Michael Cadden

### ON TRUTH (AND LIES) IN FEMINISM

In conjunction with *A Doll's House*

Co-presented by BAM and the Onassis Cultural Center NY

Hosted by Simon Critchley

Anne-Marie Slaughter

### LYON OPERA BALLET

Co-presented by BAM and the Onassis Cultural Center NY

In conjunction with Lyon Opera Ballet

Yorgos Loukos

Moderated by Jennifer Homans

### DAVE ISAY WITH GUEST SCOTT SIMON

In conjunction with *RadioLoveFest*

Dave Isay and Scott Simon

# HUMANITIES



Angélique Kidjo and Terrance McKnight | Photo: Beowulf Sheehan

## POST-SHOW TALKS

### *NOT WHAT HAPPENED*

Ain Gordon, Forrest Holzapfel, and Ken Rus Schmoll

Moderated by David Finkle

### *A RITE*

Anne Bogart, Bill T. Jones, and Janet Wong

Moderated by Katherine Profeta

### *DANCEMOTION USA<sup>SM</sup>*

Members of Doug Varone and Dancers and Brenda Angiel Aerial Dance Company, with live audience in Buenos Aires, Argentina, via live stream

Moderated by Deborah Jowitt

### *DARK LARK*

Members of Kate Weare Company

Moderated by Deborah Jowitt

### *GREEN PORNO*

Isabella Rossellini

Moderated by Suzanne Braun Levine

## UNBOUND: A LITERARY SERIES WITH BAM AND GREENLIGHT BOOKSTORE

JONATHAN LETHEM

Moderated by Laura Miller

Launch of *Dissident Gardens*

RICHARD DAWKINS

Moderated by Rebecca Newberger Goldstein

Launch of *An Appetite for Wonder: The Making of a Scientist*

ANGÉLIQUE KIDJO

Moderated by Terrance McKnight

Launch of *Spirit Rising*

ALAIN DE BOTTON

Launch of *The News: A User's Manual*

## EAT, DRINK & BE LITERARY

Presented in partnership with the National Book Awards

Authors:

SALMAN RUSHDIE

ALICE MCDERMOTT

JEFFERY EUGENIDES

NOVIOLET BULAWAYO

CHANG-RAE LEE

DANIEL ALARCÓN

ALISON BECHDEL

MEG WOLITZER

Moderators:

DEBORAH TREISMAN

BEN GREENMAN

## SPECIAL EVENTS

SHAKESPEARE'S MONTAIGNE

Co-presented by BAM, The Shakespeare Society, and New York Review of Books

Lecture and commentary by Stephen Greenblatt

Performances by Blair Brown, Michael Cerveris, Denis O'Hare, and Michael Stuhlbarg

IGNITING THE CREATIVE MIND

Hosted by Andrew Zoll

Reuben Margolin, Simon Hauger, Kemi Ilesanmi, and Zach Lieberman

# HUMANITIES



*King Lear* Master Class | Photo: Beowulf Sheehan

## MASTER CLASSES

Presented by BAM

LYRICS, LIBRETTO AND LUCK

In conjunction with *Anna Nicole*

Richard Thomas

CIRCUS AND THEATER BY ZIMMERMAN  
& DE PERROT

In conjunction *Hans was Heiri*

Gaël Santisteva

CIRCUS AND THEATER BY ZIMMERMAN  
& DE PERROT

In conjunction with *Hans was Heiri*

Dimitri Jourde

ART SONG FORWARD: FOR SINGERS  
AND COMPOSERS

In conjunction with *21c Liederabend, op.3*

Christopher Burchett and Julian Wachner

*KING LEAR*: BEHIND THE SCENES

In conjunction with *King Lear*

Neil Kutner and Elizabeth Moreau

## MASTER CLASSES

Co-presented by BAM and  
Mark Morris Dance Group

BILL T. JONES/ARNIE ZANE DANCE  
COMPANY

In conjunction with *A Rite*

Janet Wong

THE FORSYTHE COMPANY

In conjunction with *Sider*

Cyril Baldy and Tilman O'Donnell

DOUG VARONE AND DANCERS

In conjunction with DanceMotionUSA<sup>SM</sup>

Doug Varone

DANCE HEGINBOTHAM

In conjunction with *Dark Theater*

John Heginbotham

KATE WEARE COMPANY

In conjunction with *Dark Lark*

Kate Weare

BALLET PRELJOCAJ

In conjunction with *And then, one*

*thousand years of peace*

Julien Thibault

HOFESH SHECHTER

In conjunction with *Sun*

Hofesh Shechter

SUSAN MARSHALL & COMPANY

In conjunction with *Play/Pause*

Kristen Hollinsworth

REGGIE WILSON/FIST AND HEEL

PERFORMANCE GROUP

Reggie Wilson

## SCIENCE ON SCREEN

Part of BAMcinématek

Moderated by Robert Lee Hotz

*ETERNAL SUNSHINE OF THE  
SPOTLESS MIND*

Joseph LeDoux

*GRIZZLY MAN*

Jon Mooallem

*NIGHT OF THE LIVING DEAD*

Sonia Shah

# PROFESSIONAL DEVELOPMENT PROGRAM (PDP)



Cora Dance | Photo: Steve Pisano

## PDP PARTICIPATING ORGANIZATIONS

American Opera Projects\*  
Clubbed Thumb  
Cora Dance\*  
Girl Be Heard  
Kate Weare Company\*  
National Black Theatre  
Ripe Time  
The Civilians  
Vision Into Art  
White Wave Dance\*

\*Performed at the BAM Fisher at end of residency

## PARTICIPATING PERFORMERS IN TRANSITION

Janet Charleston  
Douglas Dunn & Dancers,  
Lucinda Childs Dance Company  
  
Sarah Donnelly  
STREB Extreme Action Company,  
The Metropolitan Opera  
  
Erma Katrina  
Composer, Arranger, Musical Director,  
Musician  
  
Igor Konyukhov  
Russian Imperial Ballet, Ballet with a Twist  
  
Craig Philips  
Glimmerglass Opera, New York City Opera  
  
Brian Simerson  
MoMix, Erick Hawkins Dance Company  
  
Jacinta Vlach  
PHILADANCO, Robert Moses' Kin Dance  
Company  
  
Marie Zvosec  
Buglisi Dance Theatre, TAKE Dance

## SESSIONS

The Cycle and Program Introduction  
Artistic Planning & Institutional Marketing  
Programmatic Marketing  
Fiscal Responsibilities of Board Members & Organizations (Webinar)  
Fundraising & Board Development  
Production Management & Budgeting  
Strategic Planning and Program Conclusion

## PERFORMANCES AT BAM FISHER

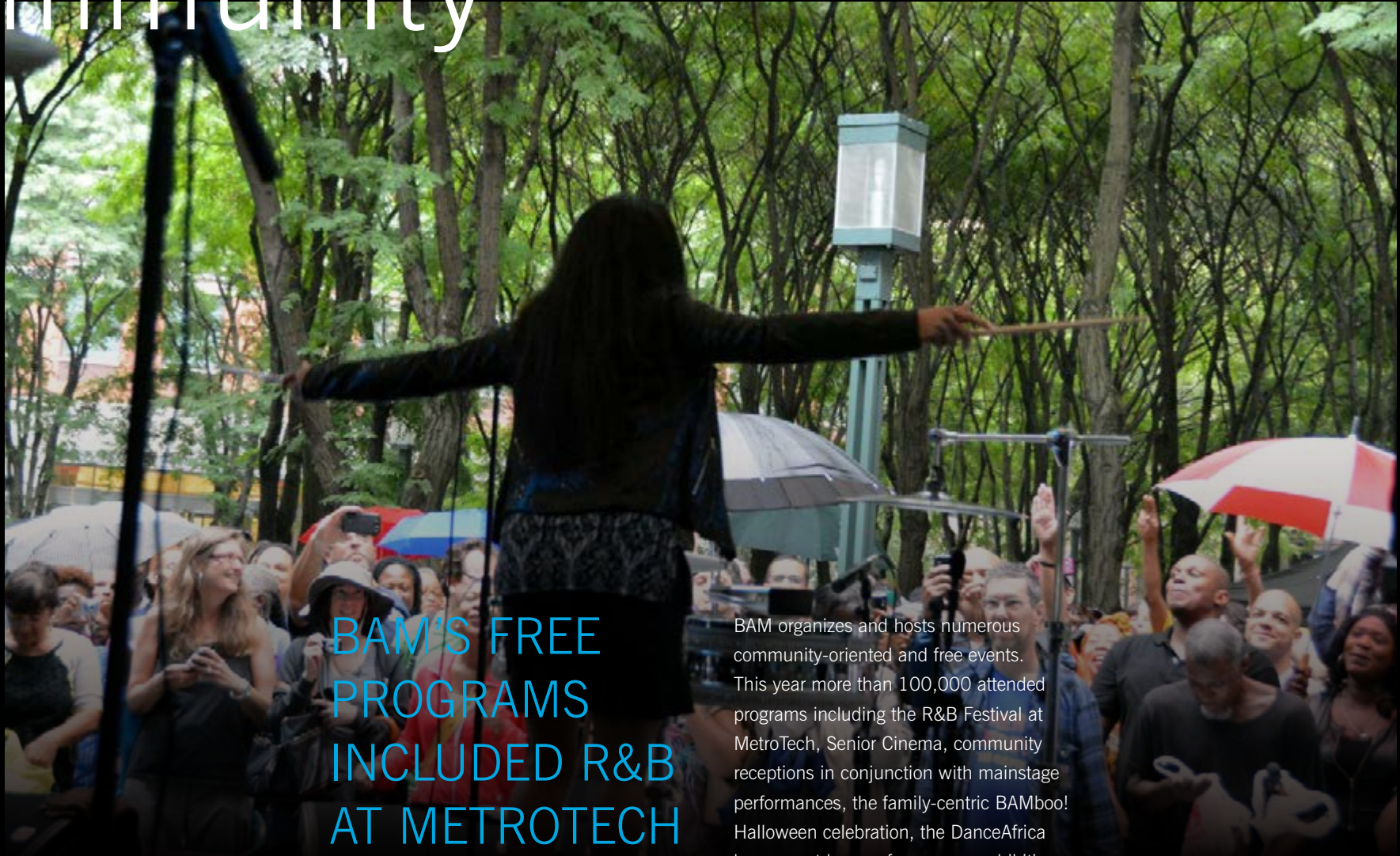
*ETERNAL NOW*  
White Wave Dance

*AS ONE*  
American Opera Projects

*STORIES*  
Cora Dance

10TH ANNIVERSARY SEASON  
Kate Weare Company

# Community



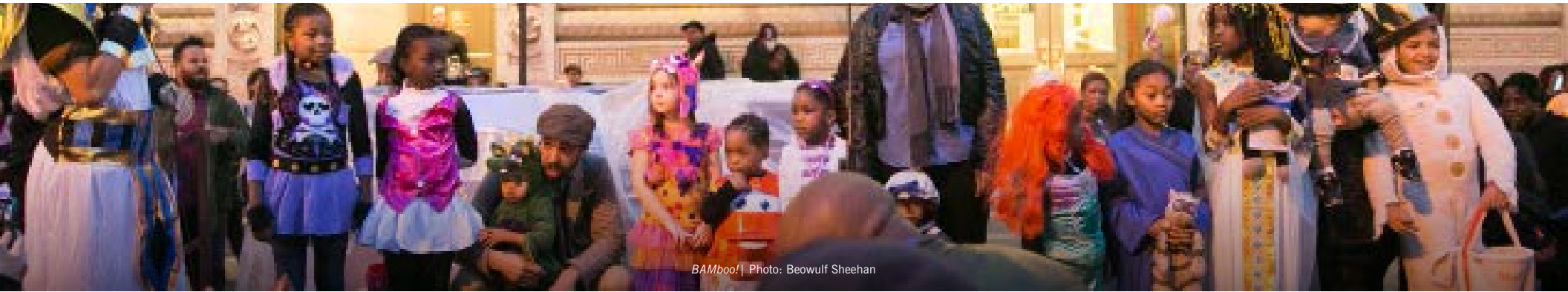
BAM'S FREE  
PROGRAMS  
INCLUDED R&B  
AT METROTECH  
AND ARTS IN  
THE GARDENS

BAM organizes and hosts numerous community-oriented and free events. This year more than 100,000 attended programs including the R&B Festival at MetroTech, Senior Cinema, community receptions in conjunction with mainstage performances, the family-centric BAMboo! Halloween celebration, the DanceAfrica bazaar, outdoor performances, exhibitions, film screenings, and the Annual Brooklyn Tribute to Dr. Martin Luther King, Jr., this year featuring Angela Davis.

Sheila E. at R&B Festival at MetroTech

Photo: Mike Benigno

# COMMUNITY



BAMboo! | Photo: Beowulf Sheehan

## DANCEAFRICA BAZAAR

40,000 visited this outdoor market celebrating DanceAfrica

---

## BLOCK PARTIES

### BAMBOO!

3,500 children and adults attended, with music by the Brooklyn Music School's Rock Ensemble, and a DJ set by Scratch DJ Academy.

---

## COMMUNITY RECEPTIONS

*SWEET SCIENCE SUITE* COMMUNITY LEADERS RECEPTION

DANCEAFRICA VISUAL ARTIST TALK & RECEPTION WITH NNENNA OKORE

American Ballet Theatre's *THE NUTCRACKER*

## ARTS IN THE GARDENS

The New York Restoration Project, founded in 1995 by Bette Midler, invited BAM to help launch a three-year arts programming initiative to increase the use of community gardens in central Brooklyn. Four lovely and essential community gardens in two different Brooklyn neighborhoods (Bed-Stuy, Gowanus) came alive with music, dance, and films this summer as part of Arts ACE: Arts Activating Community Engagement. Presentations included a day-long music festival, a Youth Moves Workshop series, acoustic concerts, an art installation with performance art presentation, and a sunset film series for three consecutive Saturdays in September 2013.

## COMMUNITY PERFORMANCES AND PARTNERSHIPS

FAB FRIDAY (outdoor performance and screening)

Presented in partnership with FAB Alliance, Fulton Street Business Improvement District:

DJ set featuring DJ BOBBITO GARCIA aka KOOL BOB LOVE

SCREENING OF *DOIN' IT IN THE PARK, PICK-UP BASKETBALL, NYC*

MAKE MUSIC NEW YORK (outdoor performance)

MY MIDNIGHT HEART

CHEN LO

PILLOW THEORY

Presented in partnership with 651 Arts and Make Music New York

MAKE MUSIC WINTER (outdoor performance)

PHIL KLINE'S BOOMBOX PARADE (outdoor performances)

Presented in partnership with FAB Alliance and Make Music New York

## LGBTQ EVENTS

EVERYBOOTY: PRIDE PARTY  
Curated by Spank, Hey Queen!, Earl Dax, and Big Art Group.

Everybody returned to BAM to celebrate Pride month Brooklyn style. Featuring the city's hottest LGBT artists and DJs, with installations, music, performances, dancing, and drinks filling the BAM Fisher from basement to rooftop until 2am.

### QUEER SOCIAL

*I AM DEVINE* screening and afterparty  
Premiere screening of *FOUR* and afterparty



# COMMUNITY



Angela Davis at MLK Tribute | Photo: Beowulf Sheehan

## R&B FESTIVAL AT METROTECH

This free outdoor summer concert series, attended by 25,000, features an eclectic roster of trailblazers and emerging musical visionaries of R&B and world music. These lunchtime performances are held at MetroTech Commons, located at the corner of Flatbush and Myrtle Avenues in Downtown Brooklyn.

### 2013

AVERY\*SUNSHINE  
SLY & ROBBIE  
FATOUmata DIAWARA  
BOMBINO  
SHEILA E.  
SHUGGIE OTIS

### 2014

NICHOLAS PAYTON presents  
BLACK AMERICAN MUSIC  
THE OHIO PLAYERS  
BUTLER BERNSTEIN & THE HOT 9

## 28TH ANNUAL BROOKLYN TRIBUTE TO DR. MARTIN LUTHER KING, JR.

BAM annually celebrates the memory of Dr. Martin Luther King, Jr. with a free event filled with music, film, art, and moving tributes from esteemed speakers and local community leaders.

### KEYNOTE SPEAKER

Angela Davis, author, activist, scholar

### MUSICAL GUESTS

José James  
Christian Cultural Center Choir

### SPEAKERS

Eric L. Adams, Brooklyn Borough President  
Karen Brooks Hopkins, BAM President  
Bill de Blasio, Mayor  
Melissa Mark-Viverito, Speaker  
Charles E. Schumer, US Senator  
Kirsten Gillibrand, US Senator  
Ken Thompson, Brooklyn District Attorney  
William J. Bratton, Police Commissioner

Hakeem Jeffries, US Congressman

Dr. Rudy Crew, President, Medgar Evers College

### FILM SCREENING

FREE ANGELA DAVIS AND ALL POLITICAL PRISONERS, introduced by Angela Davis

### COMMUNITY ART EXHIBITION

PICTURE THE DREAM  
Collages created in workshops by children from the Saratoga Village Community Center, presented in collaboration with the New York City Housing Authority (NYCHA).

### BAMCAFÉ LIVE (Part of MLK Tribute)

ONAJE ALLAN GUMBS' NEW VINTAGE

## SENIOR CINEMA

BAM Senior Cinema is a free monthly film series for community members ages 65 and older. This popular program serves approximately 2,500 seniors in the local community annually.

### DOWNHILL

SINGIN' IN THE RAIN

BUTCH CASSIDY AND THE SUNDANCE KID

WHAT EVER HAPPENED TO BABY JANE?

A SOLDIER'S STORY

THE WIZ

FOXY BROWN

NOTHING BUT A MAN

REBECCA

SATURDAY NIGHT FEVER

Including reception, workshop, and dance party

DR. NO

20 FEET FROM STARDOM

Introduced by Darlene Love

TRISTANA (Spanish film)

# DanceMotion USA<sup>SM</sup>

David Dorfman Dance, Korhan Başaran Company, and Armenian guests | Photo: Ani Collier

27 MILLION IN  
50 COUNTRIES  
CONNECTED  
WITH DANCE-  
MOTION USA<sup>SM</sup>

Now in its fourth season, DanceMotion USA<sup>SM</sup>—BAM's cultural diplomacy partnership with the Bureau of Education and Cultural Affairs of the US Department of State—sent three of America's finest contemporary dance companies on month-long outreach programs to facilitate cross-cultural exchange and mutual understanding. Through workshops, master classes, artist talks, creative collaborations, and performances, the companies shared their artistic skills and viewpoints while experiencing the host countries' cultural offerings.

Highlights this year included a special initiative in Cambodia where a technical director (Mark Morris Dance Group's Johan Henckens) spent a week teaching a local Cambodian team how to build a portable dance floor (the floor was

donated to the local dance community), hip-hop classes for 400 students in Bolivia, and outreach to disabled orphans in Tajikistan.

DMUSA 4 artist David Dorfman selected Korhan Başaran Company from Turkey, and, at the request of the US Ambassador to Armenia, two Armenian dancers to participate in the US-based residency. The residency resulted in a full-length collaborative piece performed at BAM Fisher and shared online with the program's 43,000 Livestream followers. DMUSA has reached more than 27 million people in over 156 countries in 2014 on its social media channels.

## 2014 TOURS

DAVID DORFMAN DANCE  
(NEW YORK)  
Armenia, Tajikistan, Turkey

CONTRA-TIEMPO  
(LOS ANGELES)  
Bolivia, Chile, Ecuador

MARK MORRIS DANCE GROUP  
(BROOKLYN)  
Cambodia, China, Timor-Leste, Taiwan

# Visual Art

## BAM VISUAL ART ENLIVENED PUBLIC SPACES, FROM ATRIUMS TO BIKE RACKS

### BAMBILL COVER ARTISTS

#### 2013 NEXT WAVE FESTIVAL:

George Segal, *Hand on Thigh*, 1978, painted plaster

22" x 13" x 7", courtesy The George & Helen Segal Foundation/Licensed by VAGA, NY

#### 2014 SPRING SEASON:

Bill Beckley, *I'm Prancin'*, 2013, cibachrome print, 74" x 48", courtesy of the artist

### FALL 2013

#### NEXT WAVE ART:

2013 BAM+NADA Portfolio, Natman Room

Ken Nintzel, *You Are Here*, Lepercq Space

Ken Nintzel, *You Are Here: Artist Talk and Stargazing with Ken Nintzel*, BAM Fisher Rooftop Terrace

Forrest Holzapfel, *The Labors of Silence*, Sharp Lower Lobby, BAM Fisher

Rachel Owens, *Almost Antipodeans*, Sharp Lower Lobby, BAM Fisher

Julia Colavita, Levitt Lobby installation

KAWS, BAM Bike Park Mural, 31 Lafayette Ave



### SPRING 2014

Jon Nathanson, *Movement & Motion*, Natman Room

Katie Bell, *Skewer Shower*, Levitt Lobby

Nnenna Okore, *Egwu Ije*, BAM Fisher Atrium

Nnenna Okore, Artist Talk, BAM Fisher Hillman Studio

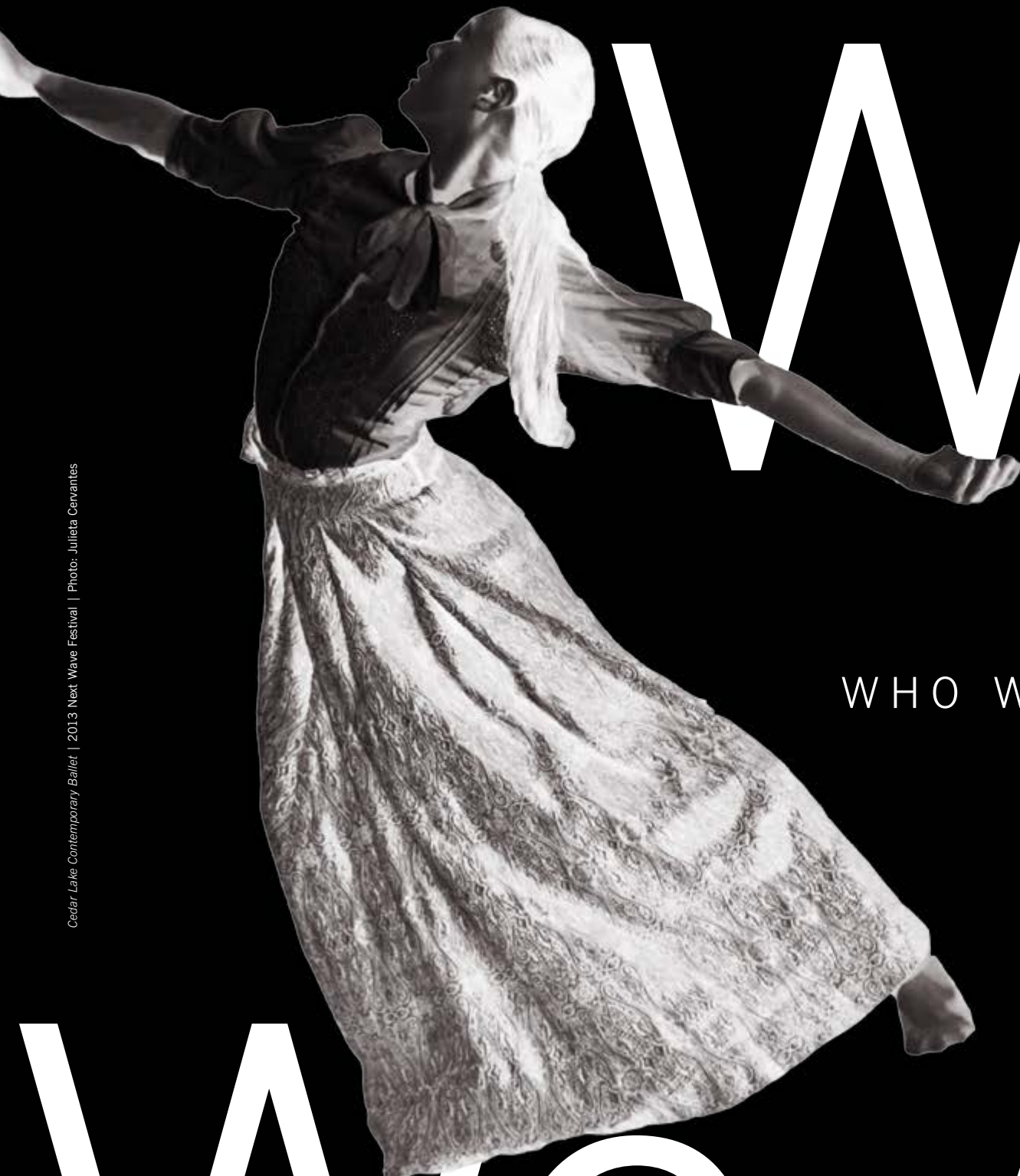
BAM Photography Portfolio IV, Diker Gallery Cafe

Pratt Institute, Art+Design Education Program Exhibition, BAM Fisher, Sharp Lower Lobby

### SPECIAL PROJECTS AND EVENTS

2013 BAM+NADA Portfolio, NADA New York and NADA Miami Beach

10th Annual BAM Art Auction, Whitebox Art Center, 2014



Who

WHO WE ARE

Who

# Membership

MEMBERS  
CAN ACCESS  
PREVIEWS,  
REHEARSALS,  
AND SPECIAL  
EVENTS  
ALONGSIDE  
ARTISTS

BAM audiences are some of the most passionate and dedicated arts supporters in New York City, and it shows in our member programs. Friends of BAM unites enthusiasts who support the diverse arts at BAM. Members receive an array of benefits including members-only advance ticket access, waived ticket handling fees, and invitations to exclusive events; this year's included a rehearsal of Isabella Rossellini's *Green Porno* and the Glyndebourne Festival Opera and London Philharmonic Orchestra's production of *Billy Budd*, and a members-only discussion with Princeton professor Michael Cadden and director Carrie Cracknell on her revolutionary take on Ibsen's *A Doll's House*.

BAM Cinema Club members support world-class first-run and repertory films

at BAM Rose Cinemas. Movie Buff-level members receive \$5 off admission to the cinemas and Movie Mogul-level members attend films for free all year. Other benefits include invitations to monthly screenings and discussions with international and national filmmakers, priority access to BAMcinemaFest, and other special screenings like a members-only sneak preview and Q&A for John Turturro's 2014 film *Fading Gigolo*.

**BAM PATRON PROGRAM & ARTIST CIRCLE**  
BAM Patrons are as extraordinary as the work they champion. Patron support starts at \$1,500, and members receive a host of VIP privileges, including personalized ticket handling and concierge services, invitations to all opening-night parties and working rehearsals, access to donor lounges, and

invitations to exclusive events. This year's Producers Council Celebration was held following a performance of *The Rime of the Ancient Mariner* starring Fiona Shaw, who attended the gathering. The Chairman's Circle Dinner, hosted by BAM's Chairman of the Board, offered an opportunity for members to come together for a meal and enjoy a performance of *The Old Woman*, directed by Robert Wilson, and featuring two unforgettable performances by Mikhail Baryshnikov and Willem Dafoe.

The Artist Circle is a group of arts champions who annually commit \$10,000 each, providing critical support needed to nurture creative innovation. Artist Circle members mingle with world-class artists at intimate gatherings. Special events have included conversations with Patrick Stewart, Ian McKellan, and Nathan Lane.

# BAM BOARD

Year ending June 30, 2014

## **BAM BOARD CHAIR**

Alan H. Fishman

## **BAM BOARD VICE CHAIRS**

William I. Campbell

Adam E. Max

## **PRESIDENT**

Karen Brooks Hopkins

## **SECRETARY**

Joseph V. Melillo

## **TREASURER**

James I. McLaren

## **PRESIDENT EMERITUS**

Harvey Lichtenstein

## **MEMBERS**

Jeffrey H. Barker

Tony Bechara

René Böttcher

Gordon Bowen

Linda Chinn

Henry Christensen III

Pamela A. Codispoti

Dr. Rudolph F. Crew

David E. R. Dangoor

Cheryl Della Rosa

Dinyar S. Devitre

Beth Rudin DeWoody

Mark Diker

Andre Dua

Brendan J. Dugan

Thérèse Esperdy

Teri Everett

Mallory Factor

Ronald E. Feiner, Esq.

Richard E. Feldman, Esq.

Steven G. Felsher

Jeanne Donovan Fisher

Barry M. Fox

MaryAnne Gilmartin

Robert M. Greenberg

G. Penn Holsenbeck

Anne Hubbard

Mark H. Jackson

Daniel A. Klores

Edgar A. Lampert

François Letaconnoux

Gary Lynch

Patricia E. Michels

Ahrin Mishan

Donald R. Mullen Jr.

William A. Perlmuth

David L. Pickett

Frances A. Resheske

Sarah C. Robertson

Jonathan F.P. Rose

Anna Kuzmick Sampas

Alberto Sanchez

Timothy Sebuya

Adi Shamir

Bartholomew A. Sheehan III

Danny Simmons

Jessica Smith

Brian Stafford

Axel Stawski

Joseph A. Stern

Pedro Torres Ciliberto

John L. Usdan

Brigitte Vosse

Nora Ann Wallace

Hon. Franklin R. Weissberg

Adam Wolfensohn

Claire Wood

Andrew Zolli

## **EX OFFICIO**

Hon. Michael R. Bloomberg

Hon. Christine C. Quinn

Hon. Marty Markowitz

Hon. Kate D. Levin

Felice Forer Axelrod

Lela Goren

Jamie Snow Markowitz

## **CHAIRMEN EMERITI**

Neil D. Chrisman

Seth S. Faison

Bruce C. Ratner

## **HONORARY TRUSTEES**

Robert L. Forbes

Charles J. Hamm

Barbara B. Haws, C.A.

William Josephson

Mary Kantor

John Lipsky

Laurie Mallet

Cathy-Ann Martine

David L. Ramsay, M.D., M.Ed.

Elaine Weinstein

Vaughn C. Williams, Esq.

# BAM SUPPORTERS

## \$500,000

brigitte nyc  
Brooklyn Borough President's Office—Eric Adams  
Brooklyn Community Foundation  
The City of New York—Bill de Blasio, Mayor  
Aashish & Dinyar Devitre  
The Irene Diamond Fund  
Judith R. & Alan H. Fishman  
Ford Foundation  
The Howard Gilman Foundation  
Goldman Sachs Gives  
Goldman Sachs Gives at the recommendation of Anne Hubbard & Harvey Schwartz  
Diane & Adam E. Max  
The New York City Council—Brooklyn Delegation  
The New York City Council—Melissa Mark-Viverito, Speaker  
New York City Department of Cultural Affairs  
New York City Economic Development Corporation  
Jonathan F.P. & Diana Calthorpe Rose  
Martha A. & Robert S. Rubin  
The Peter Jay Sharp Foundation  
The SHS Foundation  
United States Department of State, Bureau of Educational and Cultural Affairs

## \$250,000

American Express  
Bloomberg Philanthropies  
Robert Sterling Clark Foundation  
First New York Partners Management  
Charles J. & Irene F. Hamm  
The Hearst Foundations, Inc.  
The Jerome Robbins Foundation, Inc.  
Suzie & Bruce Kovner  
Leon Levy Foundation  
The Andrew W. Mellon Foundation  
Donald R. Mullen Jr.  
New York State Council on the Arts  
Stavros Niarchos Foundation  
David & Jane Walentas  
The Wall Street Journal  
The Robert W. Wilson Charitable Trust  
Anonymous

## \$100,000

Altman Foundation  
Bank of America  
William I. Campbell & Christine Wächter-Campbell Chase  
Con Edison  
Corinthian Media, Inc.  
Cumberland Packing  
Della Rosa Family Foundation  
Jeanne Donovan Fisher  
Fleurs Bella  
Susan L. Foote & Stephen L. Feinberg  
The Francena T. Harrison Foundation Trust  
The Rita and Alex Hillman Foundation  
Richard Hulbert  
IFC

Stephanie & Timothy Ingrassia  
Frederick Iseman  
Kia Motors USA  
Stephen & Maribelle Leavitt  
The Lepercq Charitable Foundation  
Toby Devan Lewis  
Pierre and Tana Matisse Foundation  
Oliver Wyman, Inc.  
Onassis Cultural Center NY  
Pepsi-Cola Bottling Company of New York  
May & Samuel Rudin Family Foundation, Inc.  
The Fan Fox & Leslie R. Samuels Foundation, Inc.  
The Shubert Foundation, Inc.  
The Skirball Foundation  
Axel Stawski & Galia Meiri  
The Joseph S. and Diane H. Steinberg Charitable Trust  
Target  
Time Warner Inc.  
Toll Brothers City Living  
Robert L. Turner  
John L. & Eva Usdan  
Viacom  
Nora Ann Wallace & Jack Nusbaum  
The Winston Foundation, Inc.

## \$50,000

Altria Group, Inc.  
Frances Bermanzohn & Alan Roseman  
Jessica E. Smith & Kevin R. Brine  
Betsy and Ed Cohen/Areté Foundation  
The Corinthian Foundation  
Ide & David Dangoor  
Davis Polk & Wardwell  
The Gladys Krieble Delmas Foundation  
Delta Air Lines  
Charles & Valerie Diker  
Brendan & Barbara Dugan  
Thérèse M. Esperdy & Robert G. Neborak  
Steven & Susan Felsner  
Jacques and Natasha Gelman Foundation  
Agnes Gund  
H3 Hardy Collaboration Architecture  
The Harkness Foundation for Dance  
The Emily Davie & Joseph S. Kornfeld Foundation  
Grace Lyu-Volckhausen  
MetLife Foundation  
James I. McLaren & Lawton W. Fitt  
Mertz Gilmore Foundation  
The Ambrose Monell Foundation  
Henry and Lucy Moses Fund, Inc.  
Nash Family Foundation  
National Endowment for the Arts  
National Grid  
Samuel I. Newhouse Foundation, Inc.  
The Barbro Osher Pro Suecia Foundation  
Paul, Weiss, Rifkind, Wharton & Garrison  
Mikhail Prokhorov Fund  
Sarah & Spencer Robertson  
Rockefeller Brothers Fund  
Goldman Sachs Gives at the direction of Pablo J. Salame  
Anna Kuzmik Sampas & George Sampas  
The Morris and Alma Schapiro Fund

Shearman & Sterling LLP  
Joseph and Sylvia Slifka Foundation  
Pedro Jose Torres & Cecilia Picon  
Jennifer Small & Adam Wolfensohn  
Santander  
Joseph A. Stern  
Joseph LeRoy & Ann C. Warner Fund  
Williams & Connolly LLP  
Anonymous

## \$25,000

Jody & John Arnhold  
Rose M. Badgeley Residuary Charitable Trust  
Susan L. Baker & Michael R. Lynch  
Mercedes T. Bass  
BNY Mellon  
Roger & Brook Berlind  
Bryan Cave LLP  
Charles Hayden Foundation  
Goldman Sachs Gives at the direction of R. Martin Chavez  
Linda & Adam Chinn  
Mr. & Mrs. Henry Christensen III  
Citi Foundation  
Constans Culver Foundation  
Robert Davoli & Eileen McDonagh  
Rohit & Katharine Desai  
DeWitt Stern  
Mark Diker & Deborah Colson  
Andre & Stephanie Dua  
Epstein Teicher Philanthropies  
Forest City Ratner Companies  
Barry M. Fox  
Freshfields Bruckhaus Deringer LLP  
Fribourg Family Foundation  
Fried, Frank, Harris, Shriver & Jacobson LLP  
Barbara Gladstone Gallery Inc.  
Beth & Gary Allen Glynn  
Goodwin Procter LLP  
The Grand Marnier Foundation  
The William and Mary Greve Foundation  
GGMC Parking, LLC  
Mr. & Mrs. Burton K. Haimes  
In Memory of Robert Sklar  
Hasty Pudding Institute of 1770  
Barbara Haws & William Josephson  
Cheryl Henson & Ed Finn  
Penn & Diane Holsenbeck  
Miriam Katowitz & Arthur Radin  
Dan & Abbe Klores  
Tal Litvin  
Frederick Loewe Foundation, Inc.  
Gary Lynch & Kate Hall  
Goldman Sachs Gives at the recommendation of David & Susan Marcinek  
Merrill Lynch & Co. Foundation, Inc.  
Morgan, Lewis & Bockius, LLP  
Linda & Stuart Nelson  
O'Melveny & Myers LLP  
Gabriel & Lindsay Pizzi  
Alex Porter  
The Reed Foundation  
Renova  
The David Rockefeller Fund, Inc.

Blanchette Hooker Rockefeller Fund  
Bette & Richard Saltzman  
The Scherman Foundation, Inc.  
Bartholomew A. Sheehan & Sheila A. Cain  
Skadden, Arps, Slate, Meagher & Flom LLP  
Mr. & Mrs. Howard Solomon  
Brian Stafford  
The Harold and Mimi Steinberg Charitable Trust  
The Geraldine Stutz Trust, Inc.  
Ram Sundaram  
Estate of Martha Zalles  
Ann Ziff  
Anonymous (2)

## \$10,000

Linda & Max Addison  
The Aeroflex Foundation  
Roger Alcaly & Helen Bodian  
Allen & Overy LLP  
Allan Arffa & Kay Matschullat  
David Ashen  
The Barker Welfare Foundation  
The Howard Bayne Fund  
Tony Bechara  
Paula & Earl Black  
Emma Bloomberg & Christopher Frissora  
The Bloomingdale's Fund of the Macy's Foundation  
Mr. & Mrs. Anthony Bowe  
The Brooklyn Brewery  
Donald A. Capoccia  
Jim Chervenak  
Cleary Gottlieb Steen & Hamilton LLP  
Simon & Sarah Collier  
Credit Suisse  
Crunch  
Beatrice & James Del Favero  
Diageo  
Dow Jones & Company, Inc.  
Jean and Louis Dreyfus Foundation, Inc.  
The Educational Foundation of America  
Robert and Mercedes Eichholz Foundation  
Carol & Roger Einiger  
Mallory & Elizabeth Factor  
Linda & Martin Fell  
Estate of Richard B. Fisher  
Alvin E. Friedman-Kien & Ryo Toyonaga  
Gibson, Dunn & Crutcher, LLP  
David & Susie Gilbert  
Goldman, Sachs & Co.  
Elaine Golin  
The Green Fund Inc.  
The Grodzins Fund  
Mr. & Mrs. Henry B. Gutman  
The Marc Haas Foundation, Inc.  
Dozier Hasty & Nancy Havens-Hasty  
Cecilia & James Herbert  
Sophie Hughes  
Consulate General of Israel  
Alan Jones & Ashley Garrett  
Gene & Terry Kaufman  
Will & Prattana Kennedy  
Alexander E. Kipka & Katherine Nintzel  
David L. Klein, Jr. Foundation

KPMG LLP  
Jay Kriegel & Kathryn McAuliffe (Tides Foundation)  
Eileen M. Lach  
Solange Landau  
François & Calleen Letacconnux  
The Levine Foundation  
John Lipsky & Zsuzsanna S. Karasz  
Carley Roney & David Liu  
The Lupin Foundation  
Brihan Lynch & Alexander Evis  
M&T Bank  
Mattis Family Foundation  
Hamish Maxwell  
Scott C. McDonald  
McGuireWoods LLP  
William Patrick McMullan & Rachel McPherson  
Constance & H. Roemer McPhee  
Medgar Evers College Gifts and Grants  
Edward S. Moore Foundation  
Barbara & Richard Moore  
Morgan Stanley  
Munger, Tolles & Olson LLP  
Charles M. Nathan & Alisa F. Levin  
New York State Office of Parks, Recreation and Historic Preservation  
Royal Norwegian Consulate General  
The O'Grady Foundation  
Joey O'Loughlin  
William J. & Dorothy K. O'Neill Foundation  
Jim & Mary Ottaway  
Michael Palm Foundation  
Stephen Palmese  
William & Laura Taft Paulsen  
Peck Stacpoole Foundation  
Laura Pels International Foundation for Theater  
Pfizer Inc.  
Philip Morris International  
Lyon & Hilary Polk  
Maya Polsky  
Marcel Przymusiński  
William & Katherine Rayner  
Reed Smith LLP  
Related Companies  
William D. & Susan Kahan Rifkin  
Max Rifkind-Barron  
River Café  
Mr. & Mrs. Theodore C. Rogers  
Rolex SA  
Alexandra Munroe & Robert Rosenkranz  
Shelley & Donald Rubin Foundation  
Michael J. Schmidtberger & Margaret Sung  
Richard G. Schneidman  
Donna & Marvin Schwartz  
Timothy & Julie Sebulnya  
Adi Shamir & Richard D. Baron  
The Evelyn Sharp Foundation  
Sidley Austin LLP  
Sills Family Foundation  
Susan & Larry Sills  
NY/NJ Snowflake Youth Foundation  
Edward Spilka  
Sam & Ellen Sporn  
The Starr Foundation  
Starry Night Fund

Jean Stein  
John Strasswimmer  
Amanda Taylor Fund of the Anne Cox Chambers Foundation  
Wilmer, Cutler, Pickering, Hale & Dorr  
Carol Yorke & Gerard Conn  
Barbara & David Zalaznick  
Pia & Jimmy Zankel  
Anonymous

## \$5,000

Matthew & Krista Annenberg  
Armour Beauty  
Jeffrey & Shari Aronson  
Leslie & Alan Beller  
Denise Bernardo & Eddie Muentes  
JJ & Michelle Berney  
Geoffrey Bible  
Bingham McCutcheon LLP  
Bill Borrelle  
Louis Camilleri  
Capezio/Ballet Makers Dance Foundation, Inc.  
Natalia Chefer  
Airbnb  
Timothy & Carol Cole  
The Coolidge Corner Theatre Foundation  
The Aaron Copland Fund for Music, Inc.  
Kimberly Cox  
Stuart D. Freedman & Carla E. Craig  
Peter Curran  
Joan K. Davidson (The J.M. Kaplan Fund)  
Cristina Enriquez-Bocobo & Cody J. Smith  
Samuel Feldman & Marilyn Meyerhoff  
Barbara J. Fife  
First American Title Insurance Company of New York  
Paul J. Fribourg  
Laurie Garrett  
Ann and Gordon Getty Foundation  
Nomi Ghez Foundation  
John N. & Gillett A. Gilbert  
Pamela Grace  
Regina M. Griffin  
Robert D. Hall & Jane Hritz Hall  
Scott & Ellen Hand  
Molly Heines & Thomas Moloney  
The Jim Henson Foundation  
Lois Herzeca  
John & Samantha Hunt  
Investors Bank  
Linda & Lawton Johnson  
Mary Kantor  
Seryl & Charles Kushner Family Foundation  
Kusmi Tea  
Robin & Edgar Lampert  
Michael Lee  
Robert Lehman Foundation  
Hon. Joseph R. Lentol, New York State Assembly  
Marion Leydier  
The Bertha and Isaac Liberman Foundation in memory of Jeffrey P. Klein  
The Liman Foundation  
Allison & Joe Magliocco  
MALIN+GOETZ  
Donna Marshall  
McGraw Hill Financial  
Joyce F. Menschel  
Mr. & Mrs. Richard L. Menschel  
Martin F. & Selma E. Mertz  
Virginia & Timothy Millhiser

The Moody's Foundation  
Morgan Stanley Polk Wealth Management  
Sanford R. Nager & Dianne Abeloff  
Stephen R. Nelson  
New England Foundation for the Arts' National Dance Project  
New York City Department for the Aging  
New York State Education Department  
Lorry Newhouse  
David & Janet Offensend  
Bill & Patty Dugan Perlmut  
The Perseus Books Group  
Diana Elzey Pinover & Eugene A. Pinover  
Rajika & Anupam Puri  
Bradley Radoff  
Frances A. Resheske  
Tracey & Phillip Riase  
Hon. Annette Robinson, New York State Assembly  
Rush Philanthropic Arts Foundation  
DT Salazar Inc.  
Jack Sanderson  
Simon Sinek  
Stephen Smith & Ford Rogers  
Ted Snowdon  
Jeanne & Steven Stellman  
Stop & Stor Charitable Fund  
Michael M. Thomas  
Jane M. Timken  
Jane & Robert Toll  
Travelers Foundation  
Teresa Tsai  
Michael Tuch Foundation, Inc.  
Margo & Anthony Viscusi  
The Weininger Foundation, Inc.  
Jill Weinstein  
Francis H. Williams  
Robert G. Wilmers  
Nina Winthrop  
Carolyn & H.L. Wise  
Elizabeth & Richard Witten  
Richard C. Yancey  
Jennifer Carlson & Andrew Zolli  
Anonymous

## \$2,500

Jacqueline & Joseph Aguanno  
Donald Allison & Sumiko Ito  
Mark Allison & Stephanie Holmquist  
Alvin J. Rockwell 1990 Charitable Trust  
The American Chai Trust  
Rina Anoussi & Takis Anoussi  
Aon Foundation  
Frank & Mary Ann Arisman  
Claude Arpels  
Adrienne Arsht  
Daniel Baldini  
David Bank & Jason R. Stone  
Leah & Benjamin Barber  
Katie Barthmaier & Brent Buck  
Jayne H. Baum  
Mickey & Martin Baumrind  
Nathaniel Beck & Karen Hackett  
Jim & Lisa Bedell  
George E. Berger & Associates LLC  
David I. Berley, Walter & Samuels, Inc.  
Elaine S. Bernstein  
Susan V. Beresford  
Paul Blackman & Sharon Rowlands  
Mr. & Mrs. James P. Bodovitz

Jill & Sheldon Bonovitz  
Dr. & Mrs. Jeffrey S. Borer  
Gary N. Boston & Dr. Charles Lee  
J. Anthony Braddock  
Brooklyn Tea Company  
Andrew D. Brown  
The Brownstone Foundation  
Robert & Joan Catell  
Beverly & Herbert Chase  
Amita & Purnendu Chatterjee  
Joyce E. Chelberg  
Pamela Codispoti & Mark Habner  
Julius Leiman-Carbia & Kyle Smith  
Ranny Cooper & David Smith  
Breukelein Institute/Dennis Corrado  
The Cowles Charitable Trust  
Anthony Creamer  
The Criterion Collection  
Sebastian Cucullu  
Linda Dennerly  
Jennie & Richard Descherer  
Diana Diamond & John Alschuler  
Trey Ditto  
Frederick N. & Michele Oka Doner  
Dr. Jack Downhill Jr.  
Larry E. Dumont, M.D. & Martin Gould  
Suzan & Fred Ehrman  
Dwight W. and Ann C. Ellis  
Gail Erickson & Christa Rice  
Fiona & Harvey Fein  
Britton & Melina Fisher  
David W. Fitts  
Mr. & Mrs. Austin T. Fragomen, Jr.  
Cultural Services of the French Embassy in the United States  
FXFOWLE Architects  
Paul A. Gangsei & Susan Herman  
Michael E. & Mary Gellert  
Lynn Gilbert  
Shellie Gillespie  
MaryAnne Gilmartin  
Virginia Gliedman  
Rhonna & Ezra Goodman  
Joseph Gordon & Mark Bauer  
Gordon & Mary Gould  
Francis Greenburger & Isabelle Autones  
Peter & Monika Greenleaf  
Jane & Jean-Marie Grenier  
Amy & Ronald Guttman  
Hartley & Marks Publishers, Inc.  
James G. Croghan & Louis R. Hedgecock  
David & Jennifer Herman-Feldman  
Dr. Arlene Heyman, MD  
Phyllis & Jan Hyde  
Scott & Viktoriia Irwin  
Mark Jackson & Karen Hagberg  
David & Amy Jaffe  
Douglas Jaffe & Kristin Heavey  
Donna & Carroll Janis  
Michele & David Joerg  
Randy & Mill Jonakait  
Barbara Julius & Marc Silberberg  
Julia Kahr & Brian Colton  
Rita J. and Stanley H. Kaplan Family Foundation, Inc.  
J. J. Kasper Jr.  
Katten Muchin Rosemann LLP  
Gerri Kay  
Philip Kearns & Sid Ray  
Helen Kim-Bordes  
Alan & Susan Kolod

Jayne Koszyn & Thomas O'Handley  
Thomas Koveleskie  
Joan Kreiss  
Mark Krueger Charitable Fund of Tides Foundation  
Miodrag Kukrika  
Christine La Monica Lunn  
Hugh & Betsy Lamle Foundation  
Nancy N. Lassalle  
LeadDog Marketing  
Roseanne Legrand  
Jonathan E. Lehman  
Bruce Leibstone  
Julius Leiman-Carbia & Kyle Smith  
Hon. Stephen Levin, New York City Council  
Richard Levy & Lorraine Gallard  
Christopher Li Greci & Robert Ohlerking  
Simon Lipskar & Kate Zuckerman  
Susan Lorence  
Lowe Campbell Ewald  
Dianne MacKenzie  
Anne Mackinnon  
Jan Marks  
John Martinez & Andrea Bozzo  
Richard J. Massey  
Mia Mather  
Deborah McAlister & Christopher Jones  
Sharon & Curtis Mechling  
Norma & Randy Moore  
Michael Newhouse  
Linda Nochlin Pommer  
Christopher A. Noey & Ghiora Aharoni  
James C. & Marie Nugent-Head Marlas  
NYC Department of Youth and Community Development  
William McGinty & Bianca Orlando  
Meredith Palmer  
Wilhelmina Parris  
Pivot  
John Perkins & Hope Dana  
Marnie S. Pillsbury  
POP NYC  
Aleksy Pryadko  
David L. Ramsay, MD  
Peter & Susan Restler  
Juergen Riehm & Jody Oberfelder  
Mr. & Mrs. David Rockefeller  
Seth Rosenberg & Catherine Lebow  
Gerald Rosenfeld  
Mace Rosenstein  
Milton T. Schaeffer  
Ira Schreger  
Nancy Schuh  
Gabriel & Jolie Schwartz  
Mr. & Mrs. Richard J. Schwartz  
Tatiana Serafin  
Vivien & Michael Shelanski  
Ted & Mary Jo Shen  
Amy Sherman-Palladino  
Gil Shiva  
Barbara Simmons  
Patricia J. S. Simpson  
Ellyne Skove  
Mike & Janet Slosberg  
Sarah & R. Sorenson  
Joan & Laurence Sorkin  
Melissa Schiff Soros  
Tom & Wendy Stephenson  
Michael & Marjorie Stern  
Dr. Susan Stewart  
The Dorothy Strelsin Foundation  
Elizabeth F. Stribling

Daniel & Toby Talbot  
Sukey Tamarkin  
Alexander Tarakhovsky & Anne Schaefer  
Kathryn Taras & Anthony Elitcher  
Juliet Taylor & James Walsh  
Josephine & Phillip Teverow  
Peter C. Trent  
Susan Unterberg  
Vanetta Vancak  
Bernardette Vaskas  
Vidaris  
Patricia Voight & Rachel Wolff  
Thomas Von Foerster  
Howard & Ruth Warshower  
Lisa Wassong  
Robert Watt & Dawn Bradford  
Michael S. Weinstein  
John R. Wellschlagler & Elizabeth D. McDermott  
Dr. Sylvia Welsh & Dr. Howard Welsh  
Victoria Westhead & John Levy  
James Wilentz & Robin Maxwell  
Richard Winger  
Kirby Woodson  
Nancy Workman & Jonathan Miller  
Peter Wright & Sally Dricks  
Nurten Goksu Yoloc  
Zeichner, Ellman & Krause LLP  
Matthew & Myra Zuckerbraun  
Anonymous (2)

## \$1,500

Hon. Peter J. Abbate Jr., New York State Assembly  
Aaron Abend  
Nora Abousteit & Joshua Ramo  
Brice Acosta  
Caroline P. Addison  
Ronald & June Ahrens  
Alexandra Alger  
Daniel Algrant  
Jonathan & Jennifer Soros  
Mark Almeida & Theresa Galvin  
American Endowment Foundation  
Stephanie Ansin  
Janet Aspen & Joseph Polizzotto  
Milton & Sally Avery Arts Foundation  
Jonathan Aviv  
Peter Balis & Brian Goldston  
Alexandra Ballard  
Paul Balseer  
Nancy Barber  
Andrea Barbieri  
Wilhelmina Barker  
In memory of Robert L. Barocci  
Hugo Barreca & Wendy Schlemm  
Byron Bartlett  
Whitney Baxter  
Martine Beamon & Eddie Joyce  
Kathleen Begala & Yyes-Andre Istel  
Anka & Louis Begley  
Carol Bellamy  
Richard & Elizabeth Bellingham  
Alan Berenbaum  
Judith Berg  
Thérèse D. Bernbach  
Marie-Eve Berty  
Julia Bienstock  
Karen Binder & Victor Ney  
Stefanie Birkmann & Sunil Savkar



Dr. David Biro  
Jeffrey Blair  
Jennie & Jake Blair  
Allison Blinken  
Alison Blood  
Bill Bragin & Lisa Philp  
Samy Brahimi & Lizanne Merrill  
Amanda Brainerd  
Dominique Bravo & Eric Sloan  
Alida Brill  
Virginia Brody  
Brooklyn Roasting Company  
Donnalson Brown  
Jacqueline Bryant  
Norman & Terri Buchan  
Noreen & Kenneth Buckfire  
Angela Bucknell  
James Burke  
Elizabeth Butson  
Laura E. Butzel & David Berg  
William & Regina Cahill  
Sol W. & Hermina Cantor Foundation  
Carmine Capossela & Maura McDonnell  
Charles Carberry  
Carolina Carvalho-Cross  
Mary Ellen Cashman  
Lori Chemla & Shelley Sonnenberg  
Perry Chen  
Neil & Kathleen Chrisman  
Joan Hardy Clark  
Clifford Chance US LLP  
Frederick & Jan Cohen  
Jill and Irwin Cohen  
Jacob Cohen, founder, Stackhouse  
Joel Cohen & Karyn Zieve  
Ofer Cohen & Melissa Dibella  
John Colborn  
Lynn Collins  
Michele & Terry Cone  
Joseph Cosgriff  
Alyn Cosgrove  
Marina Coulocoundis  
Catherine C. Cox  
Caroline & Paul Cronson  
Bobbie Crosby  
Michele Cubic & Raymond Velazquez  
Katherine Cunningham & Christopher Dixon  
Ellen & John Curtis  
Justin Daniel & Josh Cogswell  
David Darby  
Karen Dauler & Gaston Silva  
Sharon & Christopher Davis  
Sabina & Adam Deaton  
Michael J. Del Giudice  
Scott M. Delman  
Diana Delmonte-Wong & Adrian Wong  
Martha Deright  
Marie Derosa & Richard McNeil  
Edwin & Paula DeYoung  
Anne & John Dockery  
John Doherty  
Catherine Dumait-Harper & Alan Harper  
Violet & Christopher Eagan  
Frederick Eberstadt  
William S. Ehrlich & Ruth Lloyds  
Christopher & Nicole Elliman  
Lorren Erstad & David Lerner  
Boris Evelkin  
Teri Everett & Mark Davidson  
Richard & Florence Fabricant

Joseph Fazio  
Andrew & Audrey Feiner  
Ronald E. Feiner Esq.  
Martin Feinman & Amy Cooney  
Edith Ferber  
Katherine & Luke Fichthorn  
Joan Salwen Fields  
FIMF, Inc.  
Arthur & Susan Fleischer  
Jeffrey Fleishacker  
Marek Fludzinski  
Lydia Foo  
Andrew & Blake Foote  
James Fowler  
Allison Franco  
Katherine Franke  
M. Derene & Julius Frazier  
Katherine Freygang  
Friars Foundation  
Effie & Robert Fribourg  
Eleanor F. Friedman  
Alexander C. & Tillie S. Speyer Foundation  
Todd & Treacy Gaffney  
Duane McLaughlin & M. Salomé Galib  
Al Garner  
Bink Garrison  
Lynda & Marvin Geller  
Patricia Gift  
Katharine Gilbert  
Gregory F. Gilmartin  
Lauren C. Giant & Michael J. Gillespie  
Amy Kern & John M. Goldsmith  
I. Michael Goodman & Judith Uman  
Mr. & Mrs. Douglas Gray  
Great Performances  
The Green-Wood Cemetery  
Terry Grossman & Kathy Speer  
David Gruber  
Gunilla Haac  
Helen & Peter Haje  
Patricia Hallstein & Axel Kramer  
Kenneth V. Handal & Mary F. Golden  
Joan & Douglas B. Hansen  
David Hariton & Thomas Lippy  
The Haupt Foundation, Inc., in memory of Stuart Haupt  
Douglas & Jessica Healy  
Robert & Barbara Heelan  
John Heilemann  
Stephen & Ruth Hendel  
Samuel & Hagit Hertz  
Hewitt School  
Adria & Donald Hillman  
The Hoffman Law Firm  
Lily & Joel Hoffman  
Frank Holozubiec  
Katherine Hosford & Christopher Welch  
Timothy Hughes  
Whitney Hunter-Thomson  
Jan Inscho & Seymour Miles  
Steven & Susan Jacobson  
T. Radey Johnson & Jane Platt  
Alexandra Jones  
Genevieve Kahr & Dan Freedberg  
Kenneth Kail & Ivy Hwang  
Alex & Ada Katz  
Aaron & Jacquie Katzel  
Kevin Keating  
Susan Kellman  
Suzanne Greene & John Kelly  
Dennis Klejna

Kameron Kordestani  
The Krumholz Foundation  
Roberta Krumholz  
George & Liz Krupp  
Peter & Karen Labbat  
Helen & James Lally  
Rocco & Deborah Landesman  
Judith A. Langer & Arthur Applebee  
Lauren Langlois  
Drs. John & Judie LaRosa  
Andrew Lazarow & Rachel Routh  
Melva Bucksbaum & Raymond Learsy  
Matthew & Sabrina Leblanc  
Helena Lee & Richard Klapper  
Lisa Lee  
Barbara Lemperly Grant  
Carol & Joel Levy  
Jeffrey Lewis & Karin Miller-Lewis  
Anatoly Lezhen  
Kitty C. Linder  
Keith Lloyd  
Rachel Loeb & Zachary Block  
Joseph Lovett & James Cottrell  
Ann M. & Mitchell A. Lowenthal  
Richard Lynn & Joseph Evall  
Jane MacAn  
Ann MacDonald & Charles Raubicheck  
John Macintosh  
Macro Sea Inc.  
Edward Mafoud  
Camila Pastor & Stephen Maharam  
Brian & Florence Mahony  
Dr. Robert Maki  
Laurie Mallet/Ozone Design, Inc.  
Ronald Daignault & Teresa Maloney  
Andrea Marber  
Phillip Marriott & Susannah Taylor  
James R. Marshall  
Frank Martinez  
Nina Matis  
Jerri & Tom Mayer  
Liese & Peter Mayer  
Joseph McDonagh  
Dale McDonald  
Kathryn A. McDonald  
Travis McGhie & Thomas Mizer  
Alice McKown  
Gordon McLeod & Melanie Grisanti  
Elizabeth McMahan & Patrick Burns  
Susan Meirs  
Ashley & Brittany Melone  
Claudine & Aeric Meredith-Goujon  
Danny & Audrey Meyer  
Pamela Michaelcheck  
Franny Milberg  
Diane Miller  
Judith Scofield & David C. Miller  
Iliana F. Mindlin  
Minerva Audio Visual , Inc.  
Lucy Mitchell-Innes  
Helen Modie  
Donald & Gwen Moffat  
Adrian Mojica  
Shauna Monkman  
Michael & Ginger Montel  
Maria Montoya  
Aaron Morell  
John Morning  
Kathy Morton & David Nadelman  
Nancy Abraham & Arnold Moss

Edward Nahem  
Alex Namzoff  
Gabriel Nussbaum  
Barry Okun  
Roger W. Oliver  
Dr. Catherine Orentreich  
Jane Ormerod & Peter Darrell  
Brolota S. Owens  
Kathleen Owens  
Ilana Pachter & William Wynn  
Cheryl Paradis & Gene McCullough  
Gwenevere Parker  
Estelle Parsons  
Kirk & Sue Patrick  
Amy Perry  
Alexandra & Frederick Peters  
Antonia Pew  
Elizabeth Peyton  
Carl Podwoski & Virginia Lovejoy  
Nancy Portnoy  
Sandra Pierson Prior  
Project: Worldwide  
Leslie & David Puth  
The Quebec Government Office in New York  
Martin & Anna Rabinowitz  
Christopher Rapcewicz & Claudia Bungaro  
Me & Ro  
Katherine E. Ringer  
Joumana Rizk  
John Rockwell & Linda Mevorach  
Connie & Ted Roosevelt  
James & Eliza Rossman  
Lisa & Jonathan Sack  
S. Gerald Saliman & Raymond Vallejo  
Samuel Samore  
Mina Samuels & David Foster  
Nancy Sands  
Lori Saperstein  
Margaret Sarkela & John Curtis  
Douglas & Ans Schickler  
Ellen Schleifer & Jordan Katz  
Anthony Schlesinger & Anne Forward  
Lynn Schneider  
Roberta Schneiderman  
Florian Schodel  
Patricia Schoenfeld  
Richard Schwartz  
Ralf Schwieger  
Elisabeth Searles & Richard Friedberg  
Laura Sejen  
Ann Settel  
Rena Shagan  
Shamos Family Foundation  
Mark Shepherd & Juliet Blake  
Elizabeth M. & David M. Sherman  
Olatokumbo & Sheethal Shobowale  
Anne Sidamon-Eristoff  
Michael Siem & Audrey Walen  
Larry & Ashley Silverman  
Loren & Marlene Skeist  
Elaine Sloan  
Marcia Smith & Ken Andrichik  
Matthew Patrick Smyth  
Susan Snodgrass  
James Sollins  
Andrew P. Solomon & Elizabeth Bartman  
Richard & Mimi Somerby  
Annaliese Soros  
Ellen Sorrin  
Dr. Rogelio Sosnik & Dr. Irene Cairo

David & Aliana Spungen  
Barbara Stanton  
Gillian Steel  
Emily & Adam Steinberg  
Deborah Stewart & James Mintz  
Gail Stone & Matt Fishbein  
Leila Straus  
Gabrielle Tana  
Julie Tarney  
William & Anne M. Tatlock  
Charlotte L. Thorp  
Catherine K. Tice  
Irena Tocino  
Coralie Toevs  
Michael Toledano  
Amanda Topaz  
Manny Torrijos & Jing Shang Tan  
Melissa Tyson  
Chauncey Upson  
Dino Veronese  
Diana Viñoly Interiors  
Claudia Wagner & Don Lebowitz  
David Wagner  
Ethan J. Wagner & Thea Westreich  
Marcus Wainwright & Glenna Neece  
Kara Walker  
Leigh & Robin Walters  
Seth Washinsky  
Janet C. Waterhouse PhD  
Kathy & Bill Weigel  
Sandra & George Weiksner  
Laurie & David I. Weiner  
Earl D. & Gina Ingoglia Weiner  
Charlene Magen Weinstein  
Elaine Weinstein  
David F. Wertheimer  
Harry White & Esther Redmount  
Susan Whiting & Bruce Van Dusen  
Betsy Witten & Kevin Dotson  
Daniel Clay Houghton  
Doug Wolff  
Minah Worley & Richard Breg Worley  
Aamir Wyne  
Michael & Barbara Zimmerman  
Frank & Arrien Zinghini  
Micha Ziprkowski  
Anonymous (9)

*As of June 30, 2014*

# BAM STAFF

---

## EXECUTIVES:

**Karen Brooks Hopkins**, President  
**Joseph V. Melillo**, Executive Producer  
**Alice Bernstein**, Executive Vice President  
**Matthew Bregman**, Vice President for Development  
**Stephanie S. Hughley**, Vice President of Education & Humanities  
**Soo Pak**, Vice President of Marketing & Communications  
**Keith Stubblefield**, Chief Financial Officer and Vice President of Finance & Administration

---

## PRESIDENT'S OFFICE:

**Grace Eubank**, Project Coordinator  
**Michael Hurst**, Administrative Asst.

## BAM ROSE CINEMAS

**Efi Shahar**, Cinema Executive Manager  
**Michael Katz**, Projectionist  
**Adam Goldberg**, Asst. Manager  
**Adam Birnbaum**, Film Buyer  
**Andreea Drogeanu**, **Davina Roberts**, **Anthony Shields Jr.**, **Shana Kay Smith**, Head Floor Staff

---

## BAMCINÉMATEK

**Gabriele Caroti**, Director  
**Nellie Killian**, **David Reilly**, Programmers  
**Lisa Thomas**, Publicist  
**Andrew Chan**, Marketing Coordinator  
**Jesse Trussell**, Programming Asst.  
**Hannah Thomas**, Publicity & Marketing Asst.  
**Ryan Werner**, Programmer at Large

---

## ARTISTIC PROGRAMMING:

**Stonie Darling**, Department Manager  
**Ross Marshall**, Manager of Artistic Planning

## PROGRAMS & CURATORIAL

**Nick Schwartz-Hall**, Line Producer  
**Rachel Katwan**, Asst. Line Producer  
**Amy Cassello**, Assoc. Producer, Next Wave Festival  
**Darrell M. McNeill**, Assoc. Producer, Music  
**R. Michael Blanco**, DanceMotion USA<sup>SM</sup>, Project Director  
**Tanya Calamoneri**, DanceMotion USA<sup>SM</sup>, Project Manager  
**Sophia Shackleton**, DanceMotion USA<sup>SM</sup>, Project Coordinator  
**Danny Kapilian**, Producer, R&B Festival, MetroTech  
**Steven Serafin**, Special Consultant & Editor, *BAM: The Complete Works*

## ARCHIVES

**Sharon Lehner**, Director of Archives  
**Sarah Gentile**, Digital Project Archivist  
**Louie Fleck**, Archives Coordinator  
**Ryan Evans**, **Joseph Bradshaw**, **Michael Messina**, Processing Archivists  
**Jan Carr**, Digital Content Writer  
**Anita Goss**, Volunteer Librarian  
**Larysa McKenna**, **Jonna Pressman** Volunteers

---

## GENERAL MANAGEMENT:

**Patrick J. Scully**, General Manager  
**Sarah Bierenbaum**, Asst. General Manager  
**Jaclyn Bouton**, **Sarah Danielsen**, Project Managers  
**Kevin Condardo**, GM Budget Manager  
**Liana Agredo**, **Jessie Fairbanks**, Project Coordinators  
**Molly Rodino**, GM Coordinator, Budgets & Contracts  
**Dakota Scott**, Administrative Asst.  
**Nivia Prescod**, BAM Fisher Front of House Representative & Rentals Asst.

## PRODUCTION

**Neil Kutner**, Director of Production  
**Don Coleman**, Production Manager  
**Josh Escajeda**, Assoc. Production Manager  
**Paul Bartlett**, **Jennifer Grutza**, **Audrey Hoo**, **Dylan Nachand**, **Elizabeth Moreau**, Production Supervisors  
**Ryan Gastelum**, **Danielle Colburn**, Production Coordinators  
**Heli Soell**, Administrative Coordinator

## STAGE CREW

**Thomas Paulucci**, Crew Chief  
**Cyrus Similly**, Head Carpenter, OH  
**Timothy Fuller**, Flyman, OH  
**James D'Adamo**, Head Electrician, OH  
**Amy Domjan**, Asst. Electrician, OH  
**Bill Horton Jr.**, Master of Properties, OH  
**Marc Putz**, Sound Engineer, OH  
**James Kehoe**, Head Carpenter, HT  
**John Manderbach**, Head Electrician, HT  
**Edward Donohue**, Master of Properties, HT  
**Alison Dabdoub**, Sound Engineer, HT  
**Joe Werner**, Asst. Carpenter, HT  
**Oscar Gruchalski**, **Richard Wurzbach**, Utility Men  
**Mary Lou Houston**, Wardrobe Supervisor

## ARTIST SERVICES

**Mary Reilly**, Director of Artist Services

**Stacey Dinner**, Artist Services Manager  
**Jeannine Baca**, **Britney Polites** Artist Services Representatives

## THEATER MANAGEMENT

**Christine M. Gruder**, Theater Manager  
**John L. Jones**, Assoc. Theater Manager  
**Sonia Clayton**, **Jacqueline David**, **Leroy Houston**, Theater Staff Supervisors

## BUILDING OPERATIONS

**Michael Zanca**, Director of Building Operations  
**Rohan Bhasin**, Facilities Manager  
**Darryl Halickman**, Project Manager  
**Markee Glover**, Mailroom Clerk  
**Jean Smith**, **Steve McDowell**, Building Services Assocs.  
**Alysha Wright**, Building Operations Coordinator  
**Harsh Lochan**, Building Operations Asst.

## BUILDING MAINTENANCE

**Anthony Shields**, Maintenance Supervisor  
**Daniel Curato**, **Calvin Brackett**, **Ronald Hunter**, Maintainers  
**Carl Blango**, Asst. Maintainer

## SECURITY

**Chris Thompson**, Security Manager  
**Melvin Patterson**, **Manuel Taveras**, Supervising Attendant Guards  
**Kenneth Aguilera**, **Collie Dean**, Senior Attendant Guards  
**Marlon Desouza**, **Felix Jusino**, **Kevin Lemon**, **Teonia Smith**, **Andel Thomas**, **Michael Whyte**, Attendant Guards

## CUSTODIAL SERVICES

**Ramon Cabassa**, Custodial Supervisor  
**Allan Boyce**, **Ludlow Chamberlain**, **Isaias Flores**, **Mayra Guillen**, **Ron Rathan**, **Akeon Thomas**, Custodians

---

## DEVELOPMENT:

### INDIVIDUAL GIVING

**William Lynch**, Director of Leadership Gifts  
**Barbara Cummings**, Director of Development  
**Glenn Alan Stiskal**, Director of Major Gifts  
**Gwendolyn Dunaif**, Assoc. Director, Major Gifts & Patron Programs  
**Richard Serrano**, Research Manager

**Holly Shen Chaves**, Curator of Visual Arts  
**Mary Gordanier**, Visual Arts Asst.  
**Ben Lasser**, Major Gifts Coordinator  
**Travis Calvert**, Major Gifts Asst.

## MEMBERSHIP

**Katherine King**, Director of Membership Programs  
**Sarah Mischner**, Membership Manager  
**Bruce Smolanoff**, Telefund Manager  
**Cheryl-Lyn Miller**, Membership Asst.  
**Shannon Alexander**, **Jessica Benton**, **Allison Bodwell**, **Stéphanie De Latour**, **Justin Gray**, **Kimberly Howard**, **Samantha Inniss**, **Melissa Krzywicki**, **Emilie McDonald**, **Joe Mulligan**, **Adrienne Reynolds**, **Amanda Wilder**, **Saarah Zebede**, Membership Representatives

## INSTITUTIONAL GIVING

**Clemente Luna**, Director of Institutional Giving  
**Bethany Basile**, **Kailin Husayko**, Institutional Giving Managers  
**Kaitlyn McKeon**, Institutional Giving Coordinator

## CORPORATE RELATIONS

**Chantal Bernard**, Director of Corporate Relations  
**Gwendolyn Pointer**, Director, Corporate Sponsorships/ New Business Development  
**Ashley Jacobson**, Corporate Relations Manager  
**Elizabeth Sarkady**, Business Development Manager  
**Rebecca Carew**, Sponsorship Asst.

## PATRON SERVICES

**Ramzi Awn**, Director of Patron Services  
**Michael Kendrick**, Manager of Patron Services & Donor Relations  
**Jessica Hindle**, Patron Services Coordinator  
**Samantha Shay**, Patron Services Asst.

## SPECIAL EVENTS

**Margaret Breed**, Director of Special Events  
**Marissa Neiman**, Special Events Managers  
**James Vause**, Special Events Coordinator  
**Jessica Hackett**, **Paloma Wake**, Special Events Assts.

## ENDOWMENT & PLANNED GIVING

**Denis Azaro**, Endowment & Planned Giving Director  
**Alexandra Biss**, Manager of Board Relations

## EDUCATION & HUMANITIES

**Shana Parker**, Director of Operations for E&H  
**Jennifer Leeson**, Operations Manager for E&H  
**Nathan Gelgud**, Box Office Manager  
**Cathleen Plazas**, Internship Coordinator  
**Tamar MacKay**, Education Asst.  
**Rebekah Gordon**, Administrative Asst.

## EDUCATION

**Steven McIntosh**, Director of Education & Family Programs  
**John P. Tighe**, Asst. Director  
**John S. Foster**, Education Manager  
**Eveline Chang, Verushka Wray**, Program Managers  
**Suzanne Youngerman**, Curatorial Consultant

## HUMANITIES

**Violaine Huisman**, Director of Humanities  
**Molly Silberberg**, Humanities Coordinator

## LEAD INSTRUCTORS

**Joshua Cabat**, Young Film Critics  
**Michael LoMonico**, Shakespeare Teaches Teachers  
**Gwendolyn Kelso**, Young Shakespeare  
**Jenny Rocha**, Dancing into the Future  
**Pat Hall**, BAM/Restoration DanceAfrica Coordinator  
**Mo Beasley**, Arts & Justice Program

## TEACHING ARTISTS

**Sarah Abrams, Harold Akyeampong, Sékou Alájé, Jennifer Armas, Melissa Brown, Mahogany Browne, Chia-Ti Chiu, Darian Dauchan, Emily Davis, Harris Eisenstadt, Imani Faye, Kimani Fowlin, Samara Gaev, Ana Garcia, Ingrid Gordon, Mel House, Kanene Holder, Lauren Keating, Nicole Kempfskie, Farai Malianga, Geneva Manley, Hector Morales, Kwesi Nkroma, Monica Ortiz-Rossi, Gene Osborne, Pamela Patrick, Katie Issel Pitre, Baba Wali Rahman, Mike Ramsey, Gwenyth Reitz, Najee Ritter, Victor Sanchez, Robby Stamper, Rohiatou Siby, Elizabeth Simmons, Karen Thornton-Daniels, Leese Walker, Adia Whitaker**

## MARKETING & COMMUNICATIONS:

### BOX OFFICE

**Fred Dorso**, Treasurer

**Victor Jouvert**, First Asst. Treasurer  
**Kevin McLoughlin, Charlie Dolce, Russell Grier**, Asst. Treasurers

## PUBLICITY

**Sandy Sawotka**, Director of Publicity  
**Joe Guttridge**, Assoc. Director of Publicity  
**Susan Yung**, Editorial Manager  
**Sarah Garvey, Adriana Leshko**, Publicity Managers  
**David Hsieh**, Publicist  
**Lauren Morrow**, Publicity Asst.  
**Baha Ebrahimzadeh**, Education & Humanities Publicist  
**James Sutton**, Publications Asst.

## DESIGN

**Clara Cornelius**, Director of Design  
**Patrick Morin**, Assoc. Director of Design  
**Adam Hitt**, Senior Designer  
**Ryan Rowlett**, Senior Interactive Designer  
**Katie Positerry**, Interactive Designer  
**Michelle Angelosanto**, Designer  
**Casey Cleverly**, Design Studio Coordinator

## DIGITAL MEDIA & PROJECT MANAGEMENT

**Stephen Litner**, Director of Digital Media  
**Aaron Weibel**, Digital Operations Manager  
**Nicholas Breul, Jamie Kraus**, Digital Production Administrators  
**Benjamin Cohen**, Assoc. Director of Video  
**Ben Katz**, Video Production Manager  
**Alexander Guns, Catherine Lee**, Video Production Assts.

## MARKETING

**Gillian Fallon**, Director of Marketing  
**Raphaele de Boisblanc**, Program Marketing Manager  
**Allison Kadin**, Program Marketing Coordinator  
**Claire Frisbie**, Content Marketing Manager  
**Joaquin Esteva**, Advertising Manager  
**Jenny Choi**, Marketing Publications Manager  
**Robert Wood**, Copywriter  
**Lily Friedman**, Operations Manager  
**Britt Aronovich**, Marketing Analyst  
**Morgan Green**, Marketing Asst.

## STRATEGIC MARKETING

**Molly Meloy**, Director of Strategic Marketing  
**Melanie Cherry**, Marketing Manager, Community, Education & Family Programming  
**Justin Monsen**, Marketing Manager, Development

**Jessica Goldschmidt**, Copywriter  
**Rhea Daniels**, Volunteer

## TICKET & CUSTOMER SERVICES

**G. Scott Kubovsak**, Director of Ticket Services  
**Royda C. Venture**, Ticket Services Manager  
**Georgina Richardson**, Customer Care Manager  
**Giovanny Lopez**, Ticket Services Coordinator  
**Latasha McNeil**, Asst. Manager  
**Ryan Mauldin**, Senior Ticket Services Representative  
**Jonas Angelet, Anaïs Blin, Robert Ebanks, Miranda Gauvin, Laura Grady, Joya Harris, Sindy Jean, Katora Matthews, Edgar Mendoza, Warren Ng, Elsie Pacella, Megan Pearson-Mason, Edward Raube-Wilson, Tara Ricasa, Shanice Tulley, Noel Vega, Althea Wilkinson**, Ticket Services Representatives

## FINANCE & ADMINISTRATION:

### FINANCE & ADMINISTRATION

**Ellen Leszynski**, Administrative Coordinator

### FINANCE

**Kozue Oshiro**, Controller  
**Tameka White**, Asst. Controller  
**Claudia Bailey**, Budget Manager  
**Samuel Grello**, Accounts Receivable Coordinator  
**Brian Gee**, Accounting Assoc.  
**David McCullough**, Accounting Coordinator  
**Seon Gomez**, Staff Accountant  
**Adams Sachs**, Fiscal Manager  
**Douglas Fischer**, Fiscal Coordinator  
**Barbara Ely**, Fiscal Asst.

### SPECIAL PROJECTS

**Jeremy Dewey**, Director, Project Management  
**Katie Dixon**, Director, Special Projects

### CAPITAL PROJECTS

**Jonathan Jones**, Director, Capital Projects  
**Matthew Baclini**, Capital Projects Analyst  
**Laura Grady**, Capital Projects Manager

### GOVERNMENT & COMMUNITY AFFAIRS

**Tamara McCaw**, Director of Govt. & Community Affairs  
**Dewonnie Frederick**, Community Affairs & Bazaar Manager

## HUMAN RESOURCES

**Seth Azizollahoff**, Director of Human Resources  
**Jenny Rodriguez**, Human Resources Manager  
**Cynthia Smith**, Payroll Manager  
**Sajal Javid**, Benefits Manager  
**Neil Acharya, Alexis Boehmler**, Human Resources Assts.

## INFORMATION TECHNOLOGY

**William Allen Lee III**, Director of Information Technology  
**Thomas Brown**, Tessitura Business Manager  
**Ira Sibulkin**, Assoc. Director of IT  
**Chris Tusciuk**, Web Development Manager  
**Timothy Assam**, Systems Administrator  
**Svetlana Mikhalevskaya**, Database Developer  
**Jason Q. Minnis**, IT Project Manager  
**Matthew Taylor, Andrei Iliescu**, Web Developers  
**Jersy Rodriguez**, Network Analyst  
**Susan Bishop**, Administrative Coordinator  
**Lucas Austin**, Junior Desktop Analyst

## AUDIENCE RESEARCH & ANALYSIS

**George A. Wachtel**

## BOOKSELLER

**Greenlight Bookstore**

## EUROPEAN PRODUCTION REPRESENTATIVE

**On Tour Ltd., Roger Chapman**

## FILM BUYER

**Adam Birnbaum**

## IMMIGRATION COUNSEL

**Jonathan Ginsburg, Fettman, Tolchin and Majors, PC**

## INSURANCE BROKER

**Dewitt Stern**

## LEGAL COUNSEL

**Ronald E. Feiner PC**

## MEDICAL CONSULTANTS

**Ahmar Butt, MD; Anders Cohen, MD**

## RESTAURATEUR

**Great Performances**

*As of June 2014*

# Numb.



ers

# BAM

# Financial

# Statements

BAM's financial statements are audited by Marks Paneth LLP. The summarized Statements of Financial Position as of June 30, 2013 and 2014, and Statements of Activities for the fiscal years ended June 30, 2013 and 2014 were derived from BAM's financial statements. The complete audited financial statements are available at [guidestar.org](http://guidestar.org), or by writing to the NYS Charities Bureau at 120 Broadway, New York, NY 10005.

## Statements of Financial Position

<b>Assets:</b>	<b>2013</b>	<b>2014</b>
<b>Current Assets:</b>		
Cash and Cash Equivalents	1,829,870	1,453,769
Accounts and other receivables—net	773,081	799,809
Government receivables—net	2,643,889	641,443
Pledges receivable	8,956,112	8,811,527
Prepaid expenses and other current assets	3,058,682	1,835,539
<b>Total Current Assets</b>	<b>17,261,634</b>	<b>13,542,087</b>
<b>Noncurrent assets:</b>		
Pledges receivable—net	12,729,342	10,055,547
Property & Equipment—net	65,533,096	16,202,400
Beneficial interest in BAM Endowment Trust	87,877,935	96,805,763
<b>Total Noncurrent Assets</b>	<b>166,140,373</b>	<b>123,063,710</b>
<b>Total Assets</b>	<b>183,402,007</b>	<b>136,605,797</b>

<b>Liabilities and Net Assets:</b>	<b>2013</b>	<b>2014</b>
<b>Liabilities:</b>		
<b>Current Liabilities:</b>		
Accounts Payable and Accrued Expenses	5,071,128	3,451,095
Due to BAM Endowment Trust	1,257,861	1,100,000
Deferred Revenue	728,325	1,301,760
<b>Total Current Liabilities</b>	<b>7,057,314</b>	<b>5,852,855</b>
<b>Noncurrent Liabilities:</b>		
Notes Payable	275,267	-
<b>Total Liabilities</b>	<b>7,332,581</b>	<b>5,852,855</b>
<b>Net Assets:</b>		
<b>Unrestricted:</b>		
General Operations	5,058	1,547
Board Designated Funds	800,000	-
Net Investment in Property and Equipment	64,990,349	15,648,415
<b>Total Unrestricted</b>	<b>65,795,407</b>	<b>15,649,962</b>
<b>Restricted:</b>		
Temporarily Restricted	32,014,064	36,522,714
Permanently Restricted	78,259,955	78,580,266
<b>Total Net Assets</b>	<b>176,069,426</b>	<b>130,752,942</b>
<b>Total Liabilities and Net Assets</b>	<b>183,402,007</b>	<b>136,605,797</b>

# BAM FINANCIAL STATEMENTS

## STATEMENT OF ACTIVITIES

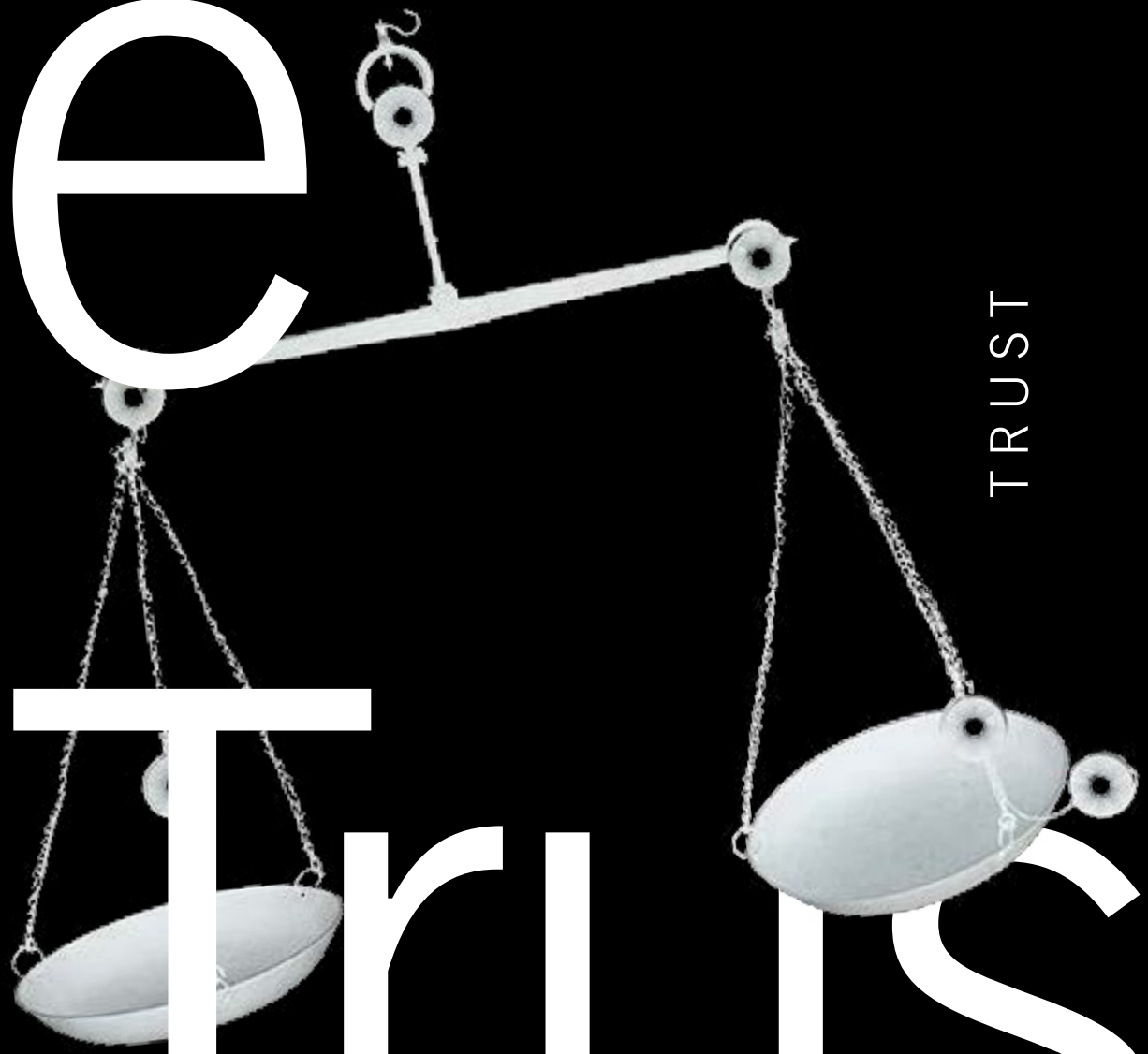
For the fiscal years ending June 30, 2013 and 2014

	Unrestricted	Board Designated	Total Unrestricted	Total Temporary Restricted	Total Permanently Restricted	Total 2013	Unrestricted	Board Designated	Total Unrestricted	Total Temporary Restricted	Total Permanently Restricted	Total 2014
<b>Operating Revenue:</b>												
Support:												
Special Events Revenue	1,975,762	-	1,975,762	-	-	1,975,762	2,156,979	-	2,156,979	8,500	-	2,165,479
Less Spec Event Expenses	(427,049)	-	(427,049)	-	-	(427,049)	(497,795)	-	(497,795)	-	-	(497,795)
Special events, Net	1,548,713	-	1,548,713	-	-	1,548,713	1,659,184	-	1,659,184	8,500	-	1,667,684
The City of New York	2,854,024	-	2,854,024	-	-	2,854,024	3,057,148	-	3,057,148	-	-	3,057,148
New York State	22,500	-	22,500	156,458	-	178,958	32,416	-	32,416	15,000	-	47,416
Federal Government	1,539,907	-	1,539,907	85,000	-	1,624,907	1,472,850	-	1,472,850	-	-	1,472,850
Private Sector	13,679,213	-	13,679,213	13,078,438	-	26,757,651	17,167,510	-	17,167,510	5,118,448	-	22,285,958
Distribution from BAM Endowment Trust	3,337,860	-	3,337,860	-	-	3,337,860	3,546,077	-	3,546,077	-	-	3,546,077
Net Assets Released	10,024,379	-	10,024,379	(10,024,379)	-	-	8,684,029	-	8,684,029	(8,864,029)	-	-
<b>Total Support</b>	<b>33,006,596</b>	<b>-</b>	<b>33,006,596</b>	<b>3,295,517</b>	<b>-</b>	<b>36,302,113</b>	<b>35,619,214</b>	<b>-</b>	<b>35,619,214</b>	<b>(3,542,081)</b>	<b>-</b>	<b>32,077,133</b>
<b>Earned Revenue:</b>												
Performance and Co-Presenter	10,166,824	-	10,166,824	-	-	10,166,824	12,471,182	-	12,471,182	-	-	12,471,182
BAM Rose Cinema	3,131,092	-	3,131,092	-	-	3,131,092	3,972,857	-	3,972,857	-	-	3,972,857
Rentals, BAMart sales, Interest and Other Income	4,499,669	-	4,499,669	-	2,159	4,501,828	2,926,252	-	2,926,252	-	1,261	2,927,513
<b>Total Earned Revenue</b>	<b>17,797,585</b>	<b>-</b>	<b>17,797,585</b>	<b>-</b>	<b>2,159</b>	<b>17,799,744</b>	<b>19,370,291</b>	<b>-</b>	<b>19,370,291</b>	<b>-</b>	<b>1,261</b>	<b>19,371,552</b>
<b>Total Operating Revenue</b>	<b>50,804,181</b>	<b>-</b>	<b>50,804,181</b>	<b>3,295,517</b>	<b>2,159</b>	<b>54,101,857</b>	<b>54,989,505</b>	<b>-</b>	<b>54,989,505</b>	<b>(3,542,081)</b>	<b>1,261</b>	<b>51,448,685</b>
<b>Operating Expense:</b>												
Program Services	42,174,498	-	42,174,498	-	-	42,174,498	44,578,245	-	44,578,245	-	-	44,578,245
Management and General	4,021,029	-	4,021,029	-	-	4,021,029	3,817,805	-	3,817,805	-	-	3,817,805
Fundraising	5,952,223	-	5,952,223	-	-	5,952,223	6,185,650	-	6,185,650	-	-	6,185,650
<b>Total Operating Expense</b>	<b>52,147,750</b>	<b>-</b>	<b>52,147,750</b>	<b>-</b>	<b>-</b>	<b>52,147,750</b>	<b>54,581,700</b>	<b>-</b>	<b>54,581,700</b>	<b>-</b>	<b>-</b>	<b>54,581,700</b>
<b>Results From Operations</b>	<b>(1,343,569)</b>	<b>-</b>	<b>(1,343,569)</b>	<b>3,295,517</b>	<b>2,159</b>	<b>1,954,107</b>	<b>407,805</b>	<b>-</b>	<b>407,805</b>	<b>(3,542,081)</b>	<b>1,261</b>	<b>(3,133,015)</b>
<b>Non Operating Activities:</b>												
Depreciation Expense	(1,010,543)	-	(1,010,543)	-	-	(1,010,543)	(1,482,306)	-	(1,482,306)	-	-	(1,482,306)
Transfer of Board Designated Assets	850,000	(850,000)	-	-	-	-	800,000	(800,000)	-	-	-	-
Net assets released from restriction for BAM Richard B. Fisher Building	892,377	-	892,377	(892,377)	-	-	-	-	-	-	-	-
Net assets released from restriction for Harvey Theater Seats	1,620,270	-	1,620,270	(1,620,270)	-	-	-	-	-	-	-	-
Net assets released from restriction for Other Capital Projects	405,609	-	405,609	(405,609)	-	-	558,047	-	558,047	(558,047)	-	-
NYS/NYC capital grants (Econ. Dev Corp, Dormitory Authority of NYS)	10,004,590	-	10,004,590	-	-	10,004,590	-	-	-	-	-	-
Extraordinary Gain	224,733	-	224,733	-	-	224,733	-	-	-	-	-	-
Transfer of BAM Richard B. Fisher Building to The City of New York	-	-	-	-	-	-	(49,628,991)	-	(49,628,991)	-	-	(49,628,991)
Increase in beneficial interest in BAM Endowment Trust	-	-	-	6,734,798	271,047	7,005,845	-	-	-	8,608,778	319,050	8,927,828
<b>Change in Net Assets</b>	<b>11,643,467</b>	<b>(850,000)</b>	<b>10,793,467</b>	<b>7,112,059</b>	<b>273,206</b>	<b>18,178,732</b>	<b>(49,345,445)</b>	<b>(800,000)</b>	<b>(50,145,445)</b>	<b>4,508,650</b>	<b>320,311</b>	<b>(45,316,484)</b>
<b>Net Assets, Beginning of Year</b>	<b>53,351,940</b>	<b>1,650,000</b>	<b>55,001,940</b>	<b>24,902,005</b>	<b>77,986,749</b>	<b>157,890,694</b>	<b>64,995,407</b>	<b>800,000</b>	<b>65,795,407</b>	<b>32,014,064</b>	<b>78,259,955</b>	<b>176,069,426</b>
<b>Net Assets, End of Year</b>	<b>64,995,407</b>	<b>800,000</b>	<b>65,795,407</b>	<b>32,014,064</b>	<b>78,259,955</b>	<b>176,069,426</b>	<b>15,649,962</b>	<b>-</b>	<b>15,649,962</b>	<b>36,522,714</b>	<b>78,580,266</b>	<b>130,752,942</b>

# The Trust

THE

TRUST



# BAM Endowment Trust



## Dear BAM Friends,

A great institution is built upon on a secure future. At BAM, a growing endowment is the foundation for expansive programming that continues to set new standards for artistic daring and excellence. The BAM Endowment provides the financial underpinning to launch new artistic initiatives, plan for future years, seize opportunities for institutional advancement, and confront unanticipated challenges. BAM sincerely thanks those listed below for their generous support in securing BAM's future.

The 2014 fiscal year was not without its challenges, with the economy suffering especially in the third quarter. However, I am happy to report that the BAM Endowment Trust (BET) achieved another milestone of solid growth for the year overall. As of June 30, 2014 the BET's value stood at \$95,800,817. Compared with the 2013 fiscal year, which saw an overall increase of 17.42% growth, the 2014 increase was a very healthy 16.14%. BAM was able to draw approximately \$3.5 million in funds to aid the institution with ambitious programmatic undertaking, which included the first fully operational year in the BAM Richard B. Fisher Building.

As always, we owe a debt of gratitude to the board members of both BAM and BET, who have worked tirelessly and contributed generously to the success of the institution. Without these guiding forces, we would not have been able to achieve such robust rates of growth. I'd like to especially acknowledge the service of Norman Peck, who stepped down as Vice Chair during the year.

It has been a great pleasure to serve BAM and to help secure its financial well-being. I thank you for your personal support and look forward to an optimistic future.

Timothy J. Ingrassia  
Chair, BAM Endowment Trust Board of Trustees

### BAM ENDOWMENT TRUST BOARD OF TRUSTEES

Year ending June 30, 2014

**CHAIR** Timothy J. Ingrassia

**VICE CHAIR** Gabriel Pizzi

**TREASURER** Keith Stubblefield

### MEMBERS

William A. Douglass III

Steven G. Felsher

Elizabeth Holtzman

James I. McLaren

Norman L. Peck

Alberto Sanchez

Timothy Sebunya

R. Edward Spilka

Nora Ann Wallace

Henry Christensen III, Ex Officio

Thérèse Esperdy, Ex Officio

Alan H. Fishman, Ex Officio



# BAM ENDOWMENT TRUST

## DONORS

### \$5,000,000 AND ABOVE

Richard B. Fisher & Jeanne Donovan Fisher  
The Howard Gilman Foundation  
The Peter Jay Sharp Foundation  
Lila Wallace-Reader's Digest Endowment Fund for  
Community, Educational, & Public Affairs Programs

### \$1,000,000 AND ABOVE

Altria Group, Inc./Next Wave Forward Fund  
BAM Fund to Support Emerging and Local Musicians  
Brooklyn Community Foundation  
The Irene Diamond Fund  
Doris Duke Charitable Foundation  
Emily H. Fisher  
The Ford Foundation Fund to Support Collaborative  
Creativity Among U.S. Artists  
The Andrew W. Mellon Foundation Fund For Opera &  
Music-Theater  
Bruce C. Ratner  
William Boss Sandberg  
The Peter Jay Sharp Fund for Opera and Theater  
The SHS Foundation  
The Starr Foundation

### \$500,000 AND ABOVE

The Campbell Family Foundation  
The Devitre Fund  
Judith R. & Alan H. Fishman  
Charles J. & Irene F. Hamm  
Maribelle & Stephen Leavitt  
Diane & Adam E. Max  
Mary & Jim Ottaway Jr. in honor  
of Ruth Blackburne Ottaway  
Rockefeller Brothers Fund  
Jonathan F.P. & Diana V.C. Rose  
Martha A. & Robert S. Rubin  
Nora Ann Wallace & Jack Nusbaum

### \$250,000 AND ABOVE

The Bohem Foundation  
The Jessica E. Smith and Kevin R. Brine Charitable  
Trust  
The Charles & Valerie Diker Dance Endowment Fund

The Horace W. Goldsmith Foundation  
Michael Bancroft Goth Endowed Annual Performance Fund  
William Randolph Hearst Endowment for Education and  
Humanities Programs  
The Rita & Alex Hillman Foundation  
Carole & Irwin Lainoff  
Maxwell Family Fund in Community Funds, Inc.  
The Geraldine Stutz Trust, Inc.

### \$100,000 AND ABOVE

Michael Bailkin, Marvin Levine, Jesse Masyr, David  
Stadtmauer  
Robert & Joan Catell Fund for Education Programs  
Neil D. & Kathleen M. Chrisman  
Mr. & Mrs. Henry Christensen III  
Madison S. Finlay  
Francena T. Harrison Performance Fund  
Rita K. Hillman  
HSBC Bank USA, N.A.  
Richard Hulbert  
Independence Community Bank  
Stephanie & Tim Ingrassia  
Mr. & Mrs. Edgar A. Lampert  
Annie Leibovitz & Studio  
Leo Burnett, USA  
James McLaren & Lawton Fitt  
Sarah G. Miller & Frank L. Coulson  
The Morgan Stanley Community and Educational Fund  
J.P. Morgan & Co. Incorporated  
The Jerome Robbins Foundation, Inc.  
May & Samuel Rudin Family Foundation  
Mr. & Mrs. Arne Vennema  
Verizon Communications  
The Isak and Rose Weinman Foundation in honor of  
Madame Lilliana Teruzzi  
The Winston Foundation  
Anonymous

For more information on the BAM  
Endowment please contact Denis Azaro  
at 718.636.4193 or [dazaro@BAM.org](mailto:dazaro@BAM.org).

Another way to help BAM prepare for the future is by making a provision in your estate plans. Create a legacy for many generations to come and ensure BAM's excellence continues for the next 150 years. Existing options for planned giving include making a bequest in your will, and naming BAM as a beneficiary in your retirement plan or insurance policy, among others. Unless otherwise specified by a donor, it is BAM's policy to apply planned

gifts toward its endowment. Individuals who have made such gifts are recognized in the select group of patrons known as BAM Angels.

For more information on Planned Giving opportunities please contact Stephanie Franco at 718.724.8317 or [sfranco@bam.org](mailto:sfranco@bam.org). All inquiries will remain strictly confidential.

Our special thanks to the foresight of the charitable BAM Angels listed below.

Denis Azaro  
Bettina Bancroft  
Robert & Joan Catell  
Neil D. Chrisman  
Mr. & Mrs. Henry Christensen III  
Mallory Factor  
Richard B. Fisher  
Judith R. & Alan H. Fishman  
Barry M. Fox  
Rita Hillman  
Barbara T. Hoffman  
William Josephson  
Charlotte & Stanley Kriegel  
Edgar A. Lampert  
Harvey Lichtenstein  
Phyllis Holbrook Lichtenstein  
Hamish & Georgene Maxwell  
Scott C. McDonald

Evelyn & Everett Ortner  
Frank J. & Adeline Pannizzo  
William Winthrop Parsons  
Marie D. Powers  
David L. Ramsay, MD  
William Boss Sandberg  
Louis Sanders  
Harriet L. Senz  
Toni Mendez Shapiro  
Bella F. Stoll  
Lynn M. Stirrup  
PaulaMarie Susi  
Charlene Magen Weinstein  
Judge Franklin R. Weissberg  
Carol Yorke & Gerard Conn

# BAM ENDOWMENT TRUST

## FINANCIAL STATEMENTS

BET's financial statements are audited by Marks Paneth LLP. The summarized Statements of Financial Position as of June 30, 2013 and 2014, and Statements of Activities for the years ended June 30, 2013 and 2014 were derived from BET's financial statements. The complete audited financial statements are available at [guidestar.org](http://guidestar.org), or by writing to the NYS Charities Bureau at 120 Broadway, New York, NY 10005.

### Statements of Financial Position

Assets:	2013	2014
Cash and cash equivalents	4,625,877	4,563,519
Investments	79,482,452	90,137,298
Due from The Brooklyn Academy of Music, Inc.	1,251,577	1,100,00
Pledges receivable—net	2,545,930	1,025,650
Prepaid expenses and other current assets	-	5,000
<b>Total Assets</b>	<b>87,905,836</b>	<b>96,831,467</b>

Liabilities and Net Assets:	2013	2014
<b>Liabilities:</b>		
Pooled income fund liabilities	27,901	25,704
<b>Total Liabilities</b>	<b>27,901</b>	<b>25,704</b>
<b>Net Assets:</b>		
Unrestricted	11,325,852	19,960,677
Temporarily Restricted	104,828	78,781
Permanently Restricted	76,447,255	76,766,305
<b>Total Net Assets</b>	<b>87,877,935</b>	<b>96,805,763</b>

<b>Total Liabilities and Net Assets</b>	<b>87,905,836</b>	<b>96,831,467</b>
---	-------------------	-------------------

# BAM ENDOWMENT TRUST

## STATEMENT OF ACTIVITIES

For the years ending June 30, 2013 and 2014

	Unrestricted	Temporarily Restricted	Permanently Restricted	Total 2013	Unrestricted	Temporarily Restricted	Permanently Restricted	Total 2014
<b>Revenues and Other Support:</b>								
Contributions	30,686	-	240,361	271,047	55,600	-	319,050	374,650
Interest and dividends	1,487,976	-	-	1,487,976	951,361	-	-	951,361
Miscellaneous income	6,003	10	-	6,013	31,671	-	-	31,671
Change in pooled income fund	-	2,314	-	2,314	-	2,197	-	2,197
Net assets released from restrictions	3,337,860	(3,337,860)	-	-	36,174	(36,174)	-	-
<b>Total Revenues and Other Support</b>	<b>4,862,525</b>	<b>(3,335,536)</b>	<b>240,361</b>	<b>1,767,350</b>	<b>1,074,806</b>	<b>(33,977)</b>	<b>319,050</b>	<b>1,359,879</b>
<b>Expenses:</b>								
Distribution - The Brooklyn Academy of Music, Inc.	3,337,860	-	-	3,337,860	3,546,077	-	-	3,546,077
Investment fees	488,954	-	-	488,954	616,802	-	-	616,802
Management fee	150,000	-	-	150,000	150,000	-	-	150,000
Audit, insurance, filing and other fees	528,373	-	-	528,373	525,854	-	-	525,854
<b>Total Expenses</b>	<b>4,505,187</b>	<b>-</b>	<b>-</b>	<b>4,505,187</b>	<b>4,838,733</b>	<b>-</b>	<b>-</b>	<b>4,838,733</b>
Results From Operations	357,338	(3,335,536)	240,361	(2,737,837)	(3,763,927)	(33,977)	319,050	(3,478,854)
Unrealized Gain on Investments	9,690,725	2,677	-	9,693,402	4,609,722	7,930	-	4,617,652
Realized Gain on Investments	50,280	-	-	50,280	7,789,030	-	-	7,789,030
<b>Change in Net Assets</b>	<b>10,098,343</b>	<b>(3,332,859)</b>	<b>240,361</b>	<b>7,005,845</b>	<b>8,634,825</b>	<b>(26,047)</b>	<b>319,050</b>	<b>8,927,828</b>
<b>Net Assets, Beginning of Year</b>	<b>1,227,509</b>	<b>3,437,687</b>	<b>76,206,894</b>	<b>80,872,090</b>	<b>11,325,852</b>	<b>104,828</b>	<b>76,447,255</b>	<b>87,877,935</b>
<b>Net Assets, End of Year</b>	<b>11,325,852</b>	<b>104,828</b>	<b>76,447,255</b>	<b>87,877,935</b>	<b>19,960,677</b>	<b>78,781</b>	<b>76,766,305</b>	<b>96,805,763</b>