

**Brooklyn Academy of Music**

Alan H. Fishman,  
Chairman of the Board

William I. Campbell,  
Vice Chairman of the Board

Adam E. Max,  
Vice Chairman of the Board

Katy Clark,  
President

Joseph V. Melillo,  
Executive Producer

# The Winter's Tale

BAM Harvey Theater

Dec 6—10 at 7:30pm; Dec 11 at 3pm

Running time: approx. two hours & 40 mins, including intermission

By William Shakespeare

Cheek by Jowl

Declan Donnellan and Nick Ormerod

Directed by **Declan Donnellan**

Designed by **Nick Ormerod**

Lighting designer **Judith Greenwood**

Composer and sound designer **Paddy Cunneen**

Associate and movement director **Jane Gibson**

*Season Sponsor:*

**Bloomberg  
Philanthropies**

*Major support for theater at BAM provided by:*

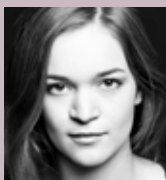
*The Francena T. Harrison Foundation Trust*

*Donald R. Mullen Jr.*

*The SHS Foundation*

*The Shubert Foundation, Inc.*

CAST



GRACE ANDREWS



JOSEPH BLACK



DAVID CARR



TOM CAWTE



RYAN DONALDSON



GUY HUGHES



ORLANDO JAMES



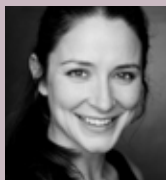
SAM MCARDLE



ELEANOR  
MCLOUGHLIN



PETER MORETON



NATALIE RADMALL-  
QUIRKE



JOY RICHARDSON



EDWARD SAYER



SAM WOOLF

# The Winter's Tale

## CAST

Leontes	<b>Orlando James</b>
Polixenes	<b>Edward Sayer</b>
Hermione / Dorcas	<b>Natalie Radmall-Quirke</b>
Perdita	<b>Eleanor McLoughlin</b>
Paulina / Mopsa	<b>Joy Richardson</b>
Emilia / Time	<b>Grace Andrews</b>
Camillo	<b>David Carr</b>
Autolycus	<b>Ryan Donaldson</b>
Florizel	<b>Sam Woolf</b>
Old Shepherd / Antigonus	<b>Peter Moreton</b>
Young Shepherd	<b>Sam McArdle</b>
Cleomenes	<b>Joseph Black</b>
Dion / Live Music Supervisor	<b>Guy Hughes</b>
Mamillius	<b>Tom Cawte</b>

## ADDITIONAL PRODUCTION CREDITS

Assistant movement director	<b>Elizabeth Ballinger</b>
Assistant director	<b>Marcus Roche</b>
Casting director	<b>Siobhan Bracke</b>
Costume supervisor	<b>Angie Burns</b>
Company manager	<b>Tim Speechley</b>
Technical director	<b>Simon Bourne</b>
Technical stage manager	<b>Robin Turley Smith</b>
Deputy stage manager	<b>Harriet Stewart</b>
Assistant stage manager	<b>Lou Ballard</b>
Sound	<b>Fred Riding</b>
Lighting	<b>David Salter</b>
Wardrobe manager	<b>Rebecca Rees</b>
American stage manager	<b>R. Michael Blanco</b>

The Actors are appearing with the permission of Actors' Equity Association.

The American Stage Manager is a member of Actors' Equity Association.





Edward Sayer, Orlando James, Natalie Radmall-Quirke, Tom Cawte. Photo Johan Persson

## Note

One of Shakespeare's greatest plays, *The Winter's Tale*, though written at the same period as *The Tempest*, smashes all the rules that *The Tempest* follows. Unity of time, place and action are hurled aside as we range across Europe, from court to country, from high tragedy to low comedy, across a time span of 16 years.

*The Winter's Tale* tells of a delusional and paranoid king who tears his family apart. But this is the new Shakespeare, after he completed his great tragedies, and the tough struggle for redemption yields flickers of hope. Initial darkness gives way to joy as Time leads the characters to a shattering conclusion...

Produced by Cheek by Jowl in a co-production with the Barbican, London; Les Gémeaux/Sceaux/Scène Nationale; Grand Théâtre de Luxembourg; Piccolo Teatro di Milano - Teatro d'Europa; Chicago Shakespeare Theater; Centro Dramático Nacional, Madrid (INAEM).



**GRACE ANDREWS** (Emilia/Time) trained at Guildhall School of Music and Drama. Theater includes: *See What I See* (Oxford Playhouse) and *As You Like It* (Union Chapel). TV includes: *Fungus the Bogeyman*; film: *Seven Deadly Sins*.

**LOU BALLARD** (assistant stage manager) trained at National Youth Theatre. Theater includes: *Platanov*, *Ivanov* and *the Seagull*, *Antony & Cleopatra*, *The Real Inspector Hound*, and *The Critic* (Chichester Festival Theatre); *Boy in the Striped Pyjamas* (Touring Children's Partnership); *101 Dalmatians* (Chichester Festival Youth Theatre); *Dial M for Murder* (Fiery Angel UK Tour); *Pitcairn* (Shakespeare's Globe); *39 Steps* (West End and UK Tour, Fiery Angel); *NSFW* (Royal Court); *Globe to Globe, Cultural Olympics* (Shakespeare's Globe); *House of Bernarda Alba* (Almeida Theatre); *The Changeling* (Southwark Playhouse); and *In a Forest Dark and Deep* (Hampstead Theatre).

**ELIZABETH BALLINGER** (assistant movement director) is a movement tutor at LAMDA and RADA. She has also taught extensively at GSMD, Drama Centre London, Mountview, MMU, and at Pennsylvania State University and the National Youth Theatre. As a movement director and choreographer, theater includes: *Rhinoceros* (Royal Court), *Fup* (National Theatre Studio), *As You Like It* (Watford Palace), as well as productions at the Soho Theatre, Oval Theatre, Tristan Bates Theatre, and various final year productions at drama schools.

**JOSEPH BLACK** (Cleomenes) trained at Bristol Old Vic. Theater includes: *Whose Shoes* (National Youth Theatre, The Lowry); *Orpheus & Eurydice* (National Youth Theatre, Old Vic Tunnels); *Twelfth Night*, *Much Ado About Nothing* (GB Theatre Company); *The Dutchman* (Brewery Theatre); and *Serious Money*, *Innocent Mistress*, and *Blue Stockings* (Bristol Old Vic Theatre School).

**R. MICHAEL BLANCO** (American stage manager) has been the stage manager at BAM for Karole Armitage's *The Predator's Ball*; Jonathan Miller's *St. Matthew Passion* and *Così fan tutte*; *Playing Shakespeare USA* with John Barton; Sydney Theater Company's *White Devil* and *Hedda Gabler*; Donmar Warehouse's *Uncle Vanya/Twelfth Night*; the RSC's *Don Carlos*, *A Midsummer Night's Dream*, and *Hecuba*; Watermill/Propeller's *Merchant of Venice*; and Vesturport Theatre's *Metamorphosis*; *Faust: A Love Story*, The Young Vic's *A Doll's House*; Fugard Theatre's *A Human Being Died That Night*, Chichester Festival Theatre's *The Judas Kiss*, Odéon-Théâtre de l'Europe's *Phaedra(s)* and Théâtre de la Ville's *Battlefield*. At the Metropolitan Opera: Kirov Ballet, Bolshoi Ballet, and Robert Wilson's *Le Martyre de Saint Sébastien*.

**SIMON BOURNE** (technical director) has been production manager for Cheek by Jowl, for which *The Winter's Tale* is his sixth production. Other recent work in theater includes *Antigone* (dir. Ivo van Hove); *School for Scandal* and *Julius Caesar* (dir. Deborah Warner); *The Resistible Rise of Arturo Ui* (dir. Jonathan Church); *The Black Rider* (dir. Robert Wilson); and *Jack and the Beanstalk*, *Mother Goose*, *Cinderella*, and *Dick Whittington* (dir. Suzie McKenna). Work in TV includes *Live at the London Palladium* (2014, 2015) and *The Royal Variety Performance* (2004–15). Bourne is also the Barbican Theatre (London) resident production manager working on all its national and international productions.

**ANGIE BURNS** (costume supervisor) has worked with Cheek by Jowl since 1986 and has worked with Donnellan and Ormerod at the National Theatre and Royal Shakespeare Company, Stratford. She has also supervised many West End shows since the late 1970s and was costume supervisor at Regents Park Open Air Theatre for 45 years.

**DAVID CARR** (Camillo) has theater credits including: *Macbeth* (Mercury Theatre Company); *Othello* (Guildford Shakespeare Company); *Owen Wingrave* (Aldeburgh Festival); *Othello* (National Theatre); *American Trade*, *The Comedy of Errors*, *As You Like It*, *Morte D'Arthur*, *Romeo & Juliet*, and *The Drunks* (RSC). TV includes: *4 O'Clock Club*; *Doctors*; *The Five*; *Living It*; *The Family Man*; *The Bill*, and *Soldier Soldier*. Film includes: *Starfish* and *Greenstreet*.

**TOM CAWTE** (Mamillius) has appeared in theater including: *The Lone Pine Club* (Pentabus); *The Den* (Faith Drama Productions); *Waiting for Godot* (The Godot Company, The Cockpit Theatre); and *Boys of the Empire* (Sandel, Edinburgh Fringe). Television includes: *Witless*; films include: *London Fields*; *No Trace*; *Duets*; *Among Sweet Flowers and Shades*; and *The Wayfaring Stranger*.

**PADDY CUNNEEN** (music) first worked with Cheek by Jowl in 1988 and has been an associate director with the company since 1990. As a composer and musical director he has worked on some 200 productions with the National Theatre, RSC, Abbey Dublin, Donmar Warehouse, Other Theatre, Liverpool Everyman, and many others, including on Broadway. He has written eight plays which have variously performed on BBC Radio, in theaters across Scotland, in Holland, at the Scatola Magica in Teatro Picolo in Milan, and at the Abbey in Dublin, with two of his plays—*Fleeto* and *Wee Andy*—winning awards at the Edinburgh, Adelaide, and Brighton fringe festivals.

**RYAN DONALDSON** (Autolykus) trained at LAMDA. Theater includes: *Shakespeare in Love* (Declan Donnellan, Noël Coward Theatre); *Proud Life*, *Much Ado About Nothing*, *The Accrington Pals*, *Platonov*, *The Oresteia*, and *The Provoked Wife* (LAMDA). Films include *The Huntsman*.

**DECLAN DONNELLAN** (director) is joint artistic director of Cheek by Jowl. As associate director at the National Theatre his productions include: *Fuenteovejuna*, *Sweeney Todd*, *The Mandate*, and both parts of *Angels in America*. Other productions include: *Le Cid* (Avignon Festival); *The Winter's Tale* (Maly Theatre of St. Petersburg); and *Shakespeare in Love* (West End). Opera includes: *Falstaff* (Salzburg Festival); ballet: *Romeo and Juliet* and *Hamlet* (Bolshoi); and film: *Bel Ami*. In 2009, he shared the Charlemagne Prize with Craig Ventner and Archbishop Tutu. In 2016, he was awarded the Golden Lion of Venice for Lifetime Achievement. His book, *The Actor and the Target*, was first published in Russian in 2000 and has subsequently appeared in 15 languages.

**JANE GIBSON** (associate and movement director) has an extensive list of film, television, and theater credits and is an associate director of Cheek by Jowl. She was head of movement at the National Theatre for 10 years. Television includes: *Pride and Prejudice* for which she was nominated for an Emmy for Outstanding Individual Achievement for Choreography; *Persuasio*, *Mansfield Park*, *Cranford*, and *Elizabeth*. Film includes: *A Little Chaos*, *Elizabeth: the Golden Age*, *Girl with a Pearl Earring*, *Nanny McPhee*, *Pride and Prejudice*, *Atonement*, *Bel Ami*, *My Week with Marilyn*, and *Oz: The Great And Powerful*.







**JUDITH GREENWOOD** (lighting designer) joined Cheek by Jowl in 1990 and is an associate director of the company. Theater includes: *Le Cid* (Avignon Festival); *Boris Godunov*, *Twelfth Night*, *Three Sisters* (Chekhov International Festival); *Falstaff* (Salzburg); *Homebody/Kabul* (Cheek by Jowl, Young Vic); *King Lear* (RSC Academy); *As You Like It*, *Great Expectations*, *Henry VIII* (RSC); *Romeo and Juliet* (Bolshoi Ballet); *The Tempest* (Tron Theatre, Glasgow); *St. Joan* (AandBC); and *Andromaque* (Bouffes du Nord). She works with Lebanese theater companies in Beirut, and has contributed to several books on African theater.

**GUY HUGHES** (Dion/live music supervisor) trained at the Royal Academy of Music. Theater includes: *The Merchant of Venice*, *Othello* (RSC); *Tess of the D'Urbervilles* (New Wimbledon Studio Theatre); *San Domino* (Arcola Theatre); *Beautiful Damned* (Leicester Square Theatre); and *A Man of No Importance* (Royal Academy of Music). Film Includes: *The Rise and Fall of the Krays*.

**ORLANDO JAMES** (Leontes) trained at Drama Centre. Theater includes: *Shakespeare in Love* (Declan Donnellan, Noël Coward Theatre), *'Tis Pity She's a Whore* (Cheek by Jowl), *Another Country* (Theatre Royal Bath & Chichester), *The Duchess of Malfi* (Eyestrings Theatre), *The Madness of George III* (West End), and *Macbeth* (Cheek by Jowl). TV includes: *Dr. Who 50th Anniversary Special*.

**SAM MCARDLE** (Young Shepherd) trained at Guildhall School of Music and Drama. Theater includes: *'Tis Pity She's a Whore* (Cheek by Jowl) and *Turandot* (The Gaiety Theatre). TV includes: *Holby City*; film: *Lady in the Van*.

**ELEANOR MCLOUGHLIN** (Perdita) trained at Drama Centre. Theater includes: *Ah, Wilderness!* (Young Vic), *Planter's Island* (Platform Theatre), and *The Playboy of the Western World* (Millbank Theatre). Film includes: *Forgotten Man*.

**PETER MORETON** (Old Shepherd/Antigonus) trained at Guildhall School of Music and Drama. Theater includes: *Shakespeare in Love* (Declan Donnellan, Noël Coward Theatre); *The Resistible Rise of Arturo Ui* (Chichester/West End); *'Tis Pity She's a Whore*, *The Duchess of Malfi*, *Hamlet* (Cheek by Jowl); *In the Land of Uz—Sixty-Six Books* (Bush Theatre); *The Three Musketeers* (Rose Theatre); *Tales from the Vienna Woods* (National Theatre); *The Prince of Homburg* (RSC, Lyric Theatre Hammersmith); *As You Like It* (Sheffield Crucible/Lyric Theatre Hammersmith); *Good* (Donmar Warehouse); *Comedy of Errors* (Propeller, International Tour), and *Measure for Measure* (Barbican, international tour). Television includes: *Doctors*, *Vexed*, *Rosemary and Thyme*, *The Glass*, *Big Bad World*, *Grafters*, *Under the Moon*, *Eastenders*, *As Time Goes By*, *Van Der Valk*, *Dead Romantic*, and *Lovejoy*. Films include: *The Secret Garden*, *Bodywork*, and *Brides of Desire*.

**NICK ORMEROD** (designer) is joint artistic director of Cheek by Jowl. For the National Theatre: *Fuenteovejuna*, *Peer Gynt*, *Sweeney Todd*, *The Mandate*, and both parts of *Angels in America*. For the Royal Shakespeare Company: *The School for Scandal*, *King Lear* (RSC Academy), and *Great Expectations*, which he also co-adapted. Other work includes: *The Rise and Fall of the City of Mahogony* (English National Opera); *Martin Guerre* (Prince Edward Theatre); *Hayfever* (Savoy Theatre); *Antigone* (The Old Vic); *Falstaff* (Salzburg Festival); and *Shakespeare in Love* (West End). He co-directed the film *Bel Ami* with Declan Donnellan.

**NATALIE RADMALL-QUIRKE** (Hermione/Dorcas) trained at Trinity College Dublin and LAMDA. Theater includes: *Martyr* (Actors' Touring Company); *Playboy of the Western World* (Southwark Playhouse); *Romeo and Juliet*, *Celebration*, *Jane Eyre* (Gate Theatre, Dublin); *Twelfth Night*, *No Romance*, *The Plough and the Stars*, *The Comedy of Errors*, *An Ideal Husband* (Abbey Theatre, Dublin); *The Family*, *Twenty Ten* (THEATREclub, Project Arts Centre); *Steel Magnolias* (Gaiety Theatre, Dublin); *White Rabbit Red Rabbit* (Absolut Dublin Fringe 2012); *Moment* (Tall Tales, Project Arts Centre); *Ellamenope Jones*, *Everybody Loves Sylvia*, *The Illusion*, *Eeeugh!topia*, *I Witness* (Finborough Theatre, London); and *Footfalls* (Players Theatre). TV includes: *Undeniable*; film: *Davin*, *The Canal*.

**REBECCA REES** (wardrobe manager) trained at University of Central England, Birmingham, earning a degree in theater design. Experience includes working as a freelance costume maker and a costume technician for Disney Cruiseline. As wardrobe supervisor, theater includes: *Lieutenant of Inishmore* and *The Long Road* (Curve Theatre, Leicester). As wardrobe mistress: *Regeneration* (Touring Consortium), *Brassed Off* (Touring Consortium), *New Jersey Nights* (Spirit Productions), *42nd Street* (UK Productions), *Annie* (Chris Moreno Productions), and *Antigone* (Barbican).

**JOY RICHARDSON** (Paulina/Mopsa) trained at Webber Douglas Academy. Theater includes: *Shakespeare in Love* (Declan Donnellan); *Much Ado About Nothing*, *The Taming of the Shrew* (Globe Tour); *To Kill a Mockingbird* (Manchester Royal Exchange); *Welcome to Thebes* (National Theatre); *The Observer*, *The Oresteia*, *Fuente Ovejuna* (National Theatre); *Mr. Puntilla and His Man Matti* (Almeida); and *A Midsummer Night's Dream* (Young Vic). Television includes: *Rebekah*, *Holby City*, *Doctors*, *Family Man*, *Trial & Retribution*, *Judge John Deed*, and *Silent Witness*. Film includes: *Children of Men* and *Tug of Love*.

**FRED RIDING** (sound) trained at De Montfort University in music technology and innovation. Theater includes: *Pig Girl* (Finborough Theatre); *Benvenuto Cellini* (ENO); *East Is East* (Trafalgar Studios UK Tour); *5* (National Youth Theatre); *Red Forest* (Belarus Free Theatre / Young Vic); *Solomon and Marion* (The Print Room); *Neville's Island* (Duke of York's Theatre); *Live/Revive/Lament* (Silent Opera); *Fear and Loathing in Las Vegas* (Heritage Arts); *FAME—Not the Musical*, *Candide*, *The Lyons*, *The Color Purple* (Menier Chocolate Factory); *The Limbless Knight* (Graeae Theatre Company); and *The Sweet Smell of Success* (Arcola Theatre).

**MARCUS ROCHE** (assistant director) trained at Royal Scottish Academy of Music and Drama, and École Philippe Gaulier. Theater (assistant) credits include: *The Odd Couple*, *Macbeth*, *Cinderella* (Perth), and *Fleeto* (Tumult in the Clouds). Directing credits include: *The Agony* and *The Ecstasy of Steve Jobs* (Gilded Balloon), *Vote for Me* (Arches), *The Night Before the Trial* (Tron Theatre), *Romeo and Juliet* (Taganrog Opera Drama Theatre), and *King Ubu* (Play, Pie and a Pint).

**DAVID SALTER** (lighting) has worked in technical management and lighting design including for: *'Tis Pity She's a Whore* (Cheek by Jowl, international tour); *Tête à Tête: The Opera Festival* (London); *Christmas on Ice*, *Spirit of the Dance*, *Dancing Queen* (Spirit Productions, international tours); *Puttin' on the Ritz*, *New Jersey Nights*, *Rock Around the Clock* (Spirit Productions, UK tours); *Maze*, *Tomorrow*, *Freedom* (Jasmin Vardimon, UK tours); *Fiend* (Casson and Friends, UK tour); *The Church Parables* (Mahogany Opera, UK/Russian tour); *Hermes Times* (Royal Opera House, London); *MMMM* (St. Johns Forest, Ashford); *Arts in Parliament* (Westminster Hall, London); *Pi-leau* (GDF, Hastings); *Cannes Cinema Club* (Punch Drunk, Cannes); *The Black Diamond* (Punch Drunk); Latitude Festival (Henham Park); and C Venues (multiple venues, Edinburgh).

**EDWARD SAYER** (Polixenes) trained at Guildhall School of Music and Drama. Theater includes: *First Light* (Chichester Festival Theatre).

**TIM SPEECHLEY** (company manager) trained at Guildhall in stage management and technical theater. Theater includes, as company manager: *Antigone* (BAM 2015 Next Wave); *Birdsong* (UK Tour); *Fela* (Lagos, Nigeria); 16 productions for Theatre Royal Bath Prods; seven UK tours for Ladysmith Black Mambazo; 18 world tours for Les Ballets Africains (National Dance Company of the Republic of Guinea); *Oh, What a Lovely War!* (UK tour/London Roundhouse); *Hiawatha* (National Theatre); Tower of London Festival 2012 for AEG; and four European tours for Moscow State Circus and Moscow Classical Ballet. Television: floor management—*Lovesea* (Granada Television); various commissions by BBC Children's Television Boreham Wood; and *Remembering Eden* (BBC Manchester).

**HARRIET STEWART** (deputy stage manager) trained at Mountview. Theater includes: *YEN, So Here We Are, Anna Karenina* (Manchester Royal Exchange); *Richter-Part* (Manchester International Festival); *Private Lives* (Bolton Octagon); *Twelfth Night, Translations* (Sheffield Crucible, English Touring Theatre); and *Disgraced* (Bush Theatre). She has also worked extensively with Paines Plough.

**ROBIN TURLEY SMITH** (technical stage manager) has theater experience including: *In the Jungle of Cities* (Arcola Theatre); *The Woman in Black* (English Theatre, Vienna); *'Tis Pity She's a Whore* (Cheek by Jowl); *2 Pianos 4 Hands* (European premiere, English Theatre, Vienna); *The Big Life* (Theatre Royal Stratford East); and *Flight of the Swan* (Linbury Studio). Opera includes: Garsington Opera and Opéra de Baugé. Television includes: *One Man Walking* (MJW Productions/Channel 4). Film includes: *BUN* (Gingerpod Productions).

**SAM WOOLF** (Florizel) trained at Bristol Old Vic Theatre School. Television includes: *Humans*; film: *Brief Intermission* and *Once a Man*; radio: *Dr. Who: Early Adventures* and *The Food Programme*.